

StoSignature Interior

Application guideline

Interiors



Interior coatings

Surfaces ensure a comfortable atmosphere in the interior, with aspects such as colour, texture, material, and feel all playing a significant role. For many years now, we have been developing interior surfaces that consistently draw inspiration from the latest international trends.





Contents

Surfaces

004 StoCalce Fondo #01 – Classico

004 Surface description

005 Application steps

006 StoCalce Fondo #02 – Rustico

006 Surface description

007 Application steps

008 StoCalce Fondo #03 – Travertino

008 Surface description

009 Application steps

010 StoCalce Fondo #04 – Naturale

010 Surface description

011 Application steps

012 StoCalce Fondo #05 – Antico

012 Surface description

013 Application steps

014 StoCalce Fondo #06 – Chimney

014 Surface description

015 Application steps

016 StoCalce Fondo #07 – Oriente

016 Surface description

017 Application steps

018 StoCalce Marmorino #01 – Classico

018 Surface description

019 Application steps

020 StoCalce Marmorino #02 – Rustico

020 Surface description

021 Application steps

Surfaces

022 StoCalce Marmorino #03 – Fantastico

022 Surface description

023 Application steps

024 StoCalce Marmorino #04 – Patina

024 Surface description

025 Application steps

026 StoCalce Marmorino #05 – Sandstone

026 Surface description

027 Application steps

028 StoCalce Veneziano #01 – Classico

028 Surface description

029 Application steps

030 StoCalce Veneziano #02 – Rustico

030 Surface description

031 Application steps

032 StoCalce Veneziano #03 – Travertino

032 Surface description

033 Application steps

034 StoCalce Veneziano #04 – Liscio

034 Surface description

035 Application steps

036 StoCalce Veneziano #05 – concrete character

036 Surface description

037 Application steps

038 StoCalce Veneziano #06 – Caiman

038 Surface description

039 Application steps

040 StoColor Metallic #01 – Metallic Ballotini

040 Surface description

041 Application steps

Cover photo:

Detached house, Stuttgart, DE

Design: Stecher architecture firm, Vaihingen an der Enz, DE

Execution: Maler Schach, Illingen, DE

Sto expertise: StoCalce FS, StoCalce Fondo, StoTap Pro 500, StoColor Supermatt

Photo: Martin Baitinger, Böblingen, DE

It should be noted that the details, illustrations, general technical information, and drawings contained in this brochure are only general proposals and details which merely describe basic functions schematically. They are not dimensionally accurate. The applicator/customer is independently responsible for determining their suitability and completeness for the construction project in question. Neighbouring works are described only schematically. All specifications and information must be adjusted or agreed in the light of local conditions and do not constitute work, detail, or installation plans. The technical specifications and product information included in the Technical Data Sheets and system descriptions/approvals must be observed.

Info service

Telephone +49 7744 57-1131

Fax +49 7744 57-2428

info.international@sto.com

www.sto.com

Surfaces

042 StoColor Opticryl Matt #01 – Earth

042 Surface description

043 Application steps

044 StoDecosit #01 – Dune

044 Surface description

045 Application steps

046 StoDecosit #02 – Linear 1

046 Surface description

047 Application steps

048 StoDecosit #03 – Linear 2

048 Surface description

049 Application steps

050 StoDecosit #04 – bark technique

050 Surface description

051 Application steps

052 StoDecosit #05 – rust appearance

052 Surface description

053 Application steps

054 StoDecosit #06 – Stencil Plaster

054 Surface description

055 Application steps

056 StoDecosit #07 – Spotted Mesh

056 Surface description

057 Application steps

058 StoLevell Calce FS #01 – Liscio

058 Surface description

059 Application steps

060 StoLevell Calce FS #02 – concrete character

060 Surface description

061 Application steps

062 StoLevell Calce FS #03 – Calce Erosa

062 Surface description

063 Application steps

064 StoLevell Calce FS #04 – Linear 1

064 Surface description

065 Application steps

Surfaces

066 StoLevell Calce FS #05 – Linear 2

066 Surface description

067 Application steps

068 StoLevell Calce FS #06 – Calce Fine

068 Surface description

069 Application steps

070 StoLevell Calce FS #07 – Calce Grossa

070 Surface description

071 Application steps

072 StoLevell Calce FS #08 – Rope

072 Surface description

073 Application steps

074 StoLook Texture #01 – Linear 1

074 Surface description

075 Application steps

076 StoLook Texture #02 – Colour Dotting

076 Surface description

077 Application steps

078 StoLook Texture #03 – lava rock appearance

078 Surface description

079 Application steps

080 StoLook Texture #04 – Patina 1

080 Surface description

081 Application steps

082 StoSil Patina #01 – Denim

082 Surface description

083 Application steps

084 StoTap Pro #01 – spotting technique

084 Surface description

085 Application steps

086 StoTap Pro #02 – Metallic

086 Surface description

087 Application steps

088 Optional enhancements

088 Patina and wax

089 Notes and tips



StoCalce Fondo #01 Classico



Performance grade 3



Description	• Decorative filler
Products	• 01326-008 StoCalce Fondo tinted
Tools	• 08288-030 Sto-Finishing Trowel • 08241-006 Sto-Velcro Float Handle • 08241-014 Sto-Moltopren® Sponge
Colour shades shown	• 16285 Architectural Colours
Possible colour shades	• StoCalce Fondo has unlimited tintability

System build-up



- 1 — StoCalce Fondo
2 — StoCalce Fondo

Substrate preparation

Depending on the type and condition of the substrate, apply a levelling coat of quality level 3 (Q3) with StoLevell In Sil. Once it has dried sufficiently, sand, dust off, and prime with StoPrim GT. After drying, apply StoPrep In evenly with the Sto-Malerwalze Standard Langflor, covering the entire surface.



Apply StoCalce Fondo to grain size as a filler base coat using a Sto-Finishing Trowel and smooth. Leave the surface to dry.



Apply StoCalce Fondo to grain size. Leave to harden until it is dry to the touch.



Use the Sto-Klett-Trägerbrett and Sto-Moltopren® Sponge to float-finish, working in circular motions similar to a figure of eight. Leave to dry.



StoCalce Fondo #02 Rustico



Description	• Decorative filler with added texture sand, textured and compacted
Products	• 01326-008 StoCalce Fondo tinted • 04240-001 StoLook Punto Z • 01329-003 StoLook Wax • 04257-001 StoLook Argento
Tools	• 08376-002 StoCalce Marmorino Finishing Trowel • 08354-011 Sto-Coarse Texturing Roller Cover • 08241-006 Sto-Velcro Float Handle • 08241-009 Sto-Rubber Float Sponge coarse • Lint-free cloth
Colour shades shown	• 16285 Architectural Colours
Possible colour shades	• StoCalce Fondo has unlimited tintability

System build-up



- 1 — StoCalce Fondo
2 — StoCalce Fondo with StoLook Punto Z
3 — StoLook Wax with StoLook Argento

Substrate preparation

Depending on the type and condition of the substrate, apply a levelling coat of quality level 3 (Q3) with StoLevell In Sil. Once it has dried sufficiently, sand, dust off, and prime with StoPrim GT. After drying, apply StoPrep In evenly with the Sto-Malerwalze Standard Langflor, covering the entire surface.



Apply StoCalce Fondo to grain size as a filler base coat using a StoCalce Marmorino Finishing Trowel and smooth. Leave the surface to dry.



Mix StoLook Punto Z as textured grain with StoCalce Fondo and stir by machine (add 10 % StoLook Punto Z). Generously apply the mixture with the StoCalce Marmorino Finishing Trowel in a non-directional manner (approx. 1.5 times grain size).



Dimple the entire surface with the Sto-Coarse Texturing Roller Cover in an irregular and non-directional manner.



Once the surface is dry to the touch (must not stick when touched), pre-smooth the surface with the StoCalce Marmorino Finishing Trowel (dimples will be pressed in slightly).



Repeat the compaction process as the drying time elapses until a slightly silk-gloss surface effect is achieved.



Mix the StoLook Argento effect powder with the StoLook Wax (add 3 % StoLook Argento). Apply the silver patina using the Sto-Rubber Float Sponge, working in roughly circular motions similar to a figure of eight.



After the StoLook Wax has dried, polish the surface with a lint-free cloth.



StoCalce Fondo #03 Travertino



Description	• Decorative filler with added texture sand, directed, textured, and compacted
Products	• 01326-008 StoCalce Fondo tinted • 01326-009 StoCalce Fondo natural white • 04240-001 StoLook Punto Z
Tools	• 08288-030 Sto-Finishing Trowel • 08376-002 StoCalce Marmorino Finishing Trowel
Colour shades shown	• 16280 Architectural Colours
Possible colour shades	• StoCalce Fondo has unlimited tintability

System build-up



- 1 — StoCalce Fondo
2 — StoCalce Fondo with StoLook Punto Z

Substrate preparation

Depending on the type and condition of the substrate, apply a levelling coat of quality level 3 (Q3) with StoLevell In Sil. Once it has dried sufficiently, sand, dust off, and prime with StoPrim GT. After drying, apply StoPrep In evenly with the Sto-Malerwalze Standard Langflor, covering the entire surface.

Note

The surface can be enhanced with StoSil Patina if necessary. There is also the option to achieve this technique with StoCalce Veneziano and StoLook Punto F.



Apply StoCalce Fondo to grain size as a filler base coat using a Sto-Finishing Trowel and smooth. Leave the surface to dry.



Mix StoLook Punto Z as textured grain with StoCalce Fondo and stir by machine (add 10 % StoLook Punto Z). Apply the mixture slightly above grain size in a non-directional manner.



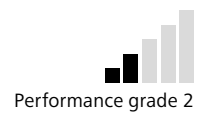
Once the surface is dry to the touch, scratch the surface in a directed manner using the front side of the StoCalce Marmorino Finishing Trowel.



As the drying time elapses, smooth and compact the surface using the StoCalce Marmorino Finishing Trowel. Repeat the compaction process as the drying time elapses until the desired surface effect is achieved.



StoCalce Fondo #04 Naturale



Description	<ul style="list-style-type: none"> Decorative filler with added texture sand, patinated with silicate lasure
Products	<ul style="list-style-type: none"> 01326-008 StoCalce Fondo tinted 04240-001 StoLook Punto Z 04970-001 StoSil Patina transparent 04970-002 StoSil Patina tinted
Tools	<ul style="list-style-type: none"> 08288-030 Sto-Finishing Trowel 08376-002 StoCalce Marmorino Finishing Trowel 17800-030 Sto-FineCoat Roller 08241-010 Sto-Rubber Float Sponge fine
Colour shades shown	<ul style="list-style-type: none"> 16286 Architectural Colours (StoCalce Fondo) 16283 Architectural Colours (StoSil Patina)
Possible colour shades	<ul style="list-style-type: none"> StoCalce Fondo has unlimited tintability StoSil Patina has limited tintability

System build-up



- 1 — StoCalce Fondo with StoLook Punto Z
2 — StoSil Patina

Substrate preparation

Depending on the type and condition of the substrate, apply a levelling coat of quality level 3 (Q3) with StoLevell In Sil. Once it has dried sufficiently, sand, dust off, and prime with StoPrim GT. After drying, apply StoPrep In evenly with the Sto-Malerwalze Standard Langflor, covering the entire surface.



1 Mix StoLook Punto Z as textured grain with StoCalce Fondo (add 15 % StoLook Punto Z). Apply the mixture with the Sto-Finishing Trowel to grain size in a non-directional manner.



2 Once the surface is dry to the touch (must not stick when touched), tool and smooth the surface with the StoCalce Marmorino Finishing Trowel in a criss-cross pattern. Leave the surface to dry.



3 Mix StoSil Patina tinted with StoSil Patina transparent in equal parts and stir well. Apply the mixture in a criss-cross pattern with the Sto-FineCoat Roller.



4 Distribute the patina over the surface with the Sto-Rubber Float Sponge fine in circular motions similar to a figure of eight wet-on-wet.



StoCalce Fondo #05 Antico



Description	• Decorative filler, rilled texture
Products	• 01326-008 StoCalce Fondo tinted • 01329-003 StoLook Wax • 04257-001 StoLook Argento
Tools	• 08376-002 StoCalce Marmorino Finishing Trowel • 08289-002 Sto-Finishing Trowel Plastic • 08241-009 Sto-Rubber Float Sponge coarse • Lint-free cloth
Colour shades shown	• 16287 Architectural Colours
Possible colour shades	• StoCalce Fondo has unlimited tintability

System build-up



- 1 — StoCalce Fondo
 2 — StoCalce Fondo
 3 — StoLook Wax with StoLook Argento

Substrate preparation

Depending on the type and condition of the substrate, apply a levelling coat of quality level 4 (Q4) with StoLevell In Sil. Once it has dried sufficiently, sand, dust off, and prime with StoPrim GT. After drying, apply StoPrep In evenly with the Sto-Malerwalze Standard Langflor, covering the entire surface.



Apply StoCalce Fondo to grain size as a filler base coat using a StoCalce Marmorino Finishing Trowel and smooth. Leave the surface to dry.



Apply StoCalce Fondo tinted to grain size using a StoCalce Marmorino Finishing Trowel and distribute evenly.



Once it has started to harden, texture the surface like a rilled render with the Sto-Finishing Trowel Plastic.



Mix the StoLook Argento effect powder with the StoLook Wax (add 3 % StoLook Argento). Distribute the wax over the surface with the Sto-Rubber Float Sponge coarse in circular motions similar to a figure of eight wet-on-wet.

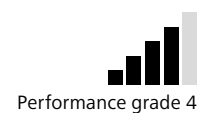


After the StoLook Wax has dried, polish the surface with a lint-free cloth.



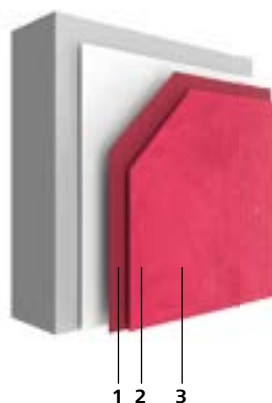
StoCalce Fondo #06

Chimney



Description	• Decorative filler with natural mica aggregates, compacted
Products	• 01326-008 StoCalce Fondo tinted • 00164-001 StoLook Mica Grossa • 01329-003 StoLook Wax
Tools	• 08288-030 Sto-Finishing Trowel • 08376-002 StoCalce Marmorino Finishing Trowel • Lint-free cloth
Colour shades shown	• Similar to S 3050-R
Possible colour shades	• StoCalce Fondo has unlimited tintability

System build-up



- 1 — StoCalce Fondo
2 — StoCalce Fondo with StoLook Mica Grossa
3 — StoLook Wax



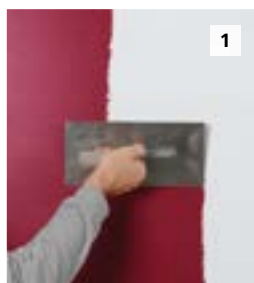
View this guideline as a film:
Simply scan the QR code or go to the YouTube channel.

Substrate preparation

Depending on the type and condition of the substrate, apply a levelling coat of quality level 3 (Q3) with StoLevell In Sil. Once it has dried sufficiently, sand, dust off, and prime with StoPrim GT. After drying, apply StoPrep In evenly with the Sto-Malerwalze Standard Langflor, covering the entire surface.

Note

Factors such as the material's layer thickness, the actual mass that is compacted, the compaction process, and the tradesman's signature style affect the result.



Apply StoCalce Fondo to grain size as a filler base coat using a Sto-Finishing Trowel and smooth. Leave the surface to dry.



Mix StoLook Mica Grossa into StoCalce Fondo (add 0.8% StoLook Mica Grossa). To one 25 kg container of StoCalce Fondo, add one container of StoLook Mica Grossa = 0.8%. Apply the mixture with pressure. Evenly work the mixture and tool and smooth to one level (mica may break apart – this is normal).



Once it has started to harden, carefully compact the material using the StoCalce Marmorino Finishing Trowel. Leave the surface to dry.



If required, apply StoLook Wax over the entire surface using the StoCalce Marmorino Smoothing Trowel. After a short drying time, polish the surface with a lint-free cloth.

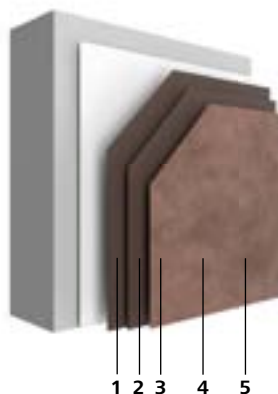


StoCalce Fondo #07 Oriente



Description	• Decorative filler, compacted
Products	<ul style="list-style-type: none"> • 01326-009 StoCalce Fondo natural white • 01326-008 StoCalce Fondo tinted • 01329-003 StoLook Wax • 01339-001 StoLook Wax forte
Tools	<ul style="list-style-type: none"> • 08288-030 Sto-Finishing Trowel • 08241-014 Sto-Moltopren® Sponge • 08376-002 StoCalce Marmorino Finishing Trowel • 17106-003 Sto-Wide Brush, oval
Colour shades shown	• 33130 StoColor System
Possible colour shades	• StoCalce Fondo has unlimited tintability

System build-up



- 1 — StoCalce Fondo
- 2 — StoCalce Fondo
- 3 — StoCalce Fondo
- 4 — StoLook Wax
- 5 — StoLook Wax forte

Substrate preparation

Depending on the type and condition of the substrate, apply a levelling coat of quality level 3 (Q3) with StoLevell In Sil. Once it has dried sufficiently, sand, dust off, and prime with StoPrim GT. After drying, apply StoPrep In evenly with the Sto-Malerwalze Standard Langflor, covering the entire surface.



Apply StoCalce Fondo to grain size as a filler base coat using a Sto-Finishing Trowel and smooth. Leave the surface to dry.



Apply StoCalce Fondo to grain size using a Sto-Finishing Trowel. Float-finish the surface with the Sto-Moltopren® Sponge. Leave to harden until it is dry to the touch.



Apply StoCalce Fondo again to grain size. Pre-compact the surface with the StoCalce Marmorino Finishing Trowel.



Apply a thin layer of StoLook Wax with the Sto-Wide Brush, oval.



Compact the surface with the fine slurry of StoLook Wax and StoCalce Fondo using the StoCalce Marmorino Finishing Trowel. Leave to harden slightly. Compact the surface again until it is smooth.



After two or three days, apply StoLook Wax forte as protection.

Note

Compacting with the water-based StoLook Wax can lead to deviations from the original shade that give the surface its unique character.

Creating this surface requires a sensitive touch. Processes such as compacting or applying the wax slurry heavily influence the results.

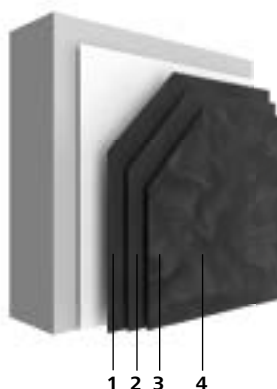


StoCalce Marmorino #01 Classico



Description	• Decorative filler, compacted and glazed with a metallic-effect coating
Products	• 01321-023 StoCalce Marmorino tinted • 01329-003 StoLook Wax
Tools	• 08376-001 StoCalce Marmorino Finishing Trowel • Lint-free cloth
Colour shades shown	• 16280 Architectural Colours
Possible colour shades	• StoCalce Marmorino has unlimited tintability

System build-up



- 1 — StoCalce Marmorino
- 2 — StoCalce Marmorino
- 3 — StoCalce Marmorino
- 4 — StoLook Wax

Substrate preparation

Depending on the type and condition of the substrate, apply a levelling coat of quality level 4 (Q4) with StoLevell In Sil. Once it has dried sufficiently, sand, dust off, and prime with StoPrim GT.



Apply StoCalce Marmorino with the StoCalce Marmorino Finishing Trowel in a criss-cross pattern over the entire surface. Once the surface has started to harden, tool and smooth it to achieve a smooth, flat surface.



After a sufficient drying time, apply StoCalce Marmorino with the StoCalce Marmorino Finishing Trowel in a criss-cross pattern over the entire surface. Once the surface has started to harden, tool and smooth it to achieve a smooth, flat surface. Leave the surface to dry for at least 12 hours.



Apply StoCalce Marmorino with the StoCalce Marmorino Finishing Trowel in a criss-cross pattern over the entire surface. While it is drying, carefully compact the surface with the StoCalce Marmorino Finishing Trowel until you achieve the desired result. Make sure that the edge of the tool is clean at all times. Leave the surface to dry.



For enhancement and surface protection, there is the option to apply StoLook Wax with effect powder (StoLook Argento, Oro, Rame) using the StoCalce Marmorino Finishing Trowel in a non-directional manner.



After the StoLook Wax has dried, polish the surface with a lint-free cloth.



StoCalce Marmorino #02 Rustico



Description	• Decorative filler, compacted and textured in dimple technique
Products	• 01321-023 StoCalce Marmorino tinted • 01329-003 StoLook Wax • 04257-001 StoLook Argento
Tools	• 08376-002 StoCalce Marmorino Finishing Trowel • 08354-011 Sto-Coarse Texturing Roller Cover • Lint-free cloth
Colour shades shown	• 16280 Architectural Colours
Possible colour shades	• StoCalce Marmorino has unlimited tintability

System build-up



- 1 — StoCalce Marmorino
- 2 — StoCalce Marmorino
- 3 — StoCalce Marmorino (dimples)
- 4 — StoLook Wax with StoLook Argento

Substrate preparation

Depending on the type and condition of the substrate, apply a levelling coat of quality level 4 (Q4) with StoLevell In Sil. Once it has dried sufficiently, sand, dust off, and prime with StoPrim GT.



1

Apply StoCalce Marmorino with the StoCalce Marmorino Finishing Trowel in a criss-cross pattern over the entire surface.



2

After a sufficient drying time, apply StoCalce Marmorino with the StoCalce Marmorino Finishing Trowel over the entire surface for a spot-smoothed finish. Once the surface has started to harden, slightly compact the surface (surface should not be glossy).



3

Dilute the StoCalce Marmorino with a little water if necessary so that you can roll it. Then roll it onto the entire surface with the Sto-Coarse Texturing Roller Cover in a non-directional and irregular manner.



4

Once it has started to harden, press raised dimples with the StoCalce Marmorino Finishing Trowel.



5

After some additional drying time, highly compact the material with the StoCalce Marmorino Finishing Trowel.



6

Mix the StoLook Argento effect powder with the StoLook Wax (add 3 % StoLook Argento). Apply the mixture with the StoCalce Marmorino Finishing Trowel.



7

After the StoLook Wax has dried, polish the surface with a lint-free cloth.

Note

For intense or increased loads, the StoLook Wax forte is recommended.



StoCalce Marmorino #03 Fantastico



Description	• Decorative filler, compacted in spotting technique
Products	• 01321-023 StoCalce Marmorino tinted • 01329-003 StoLook Wax • 04257-001 StoLook Argento
Tools	• 08376-001 StoCalce Marmorino Finishing Trowel • Lint-free cloth
Colour shades shown	• 16280 Architectural Colours
Possible colour shades	• StoCalce Marmorino has unlimited tintability • StoLook Argento/Oro/Rame

System build-up



- 1 — StoCalce Marmorino
- 2 — StoCalce Marmorino
- 3 — StoCalce Marmorino (spotting)
- 4 — StoLook Wax with StoLook Argento

Substrate preparation

Depending on the type and condition of the substrate, apply a levelling coat of quality level 3 (Q3) with StoLevell In Sil. Once it has dried sufficiently, sand, dust off, and prime with StoPrim GT.



1 Apply StoCalce Marmorino with the StoCalce Marmorino Finishing Trowel in a criss-cross pattern. Once it has started to harden, lightly tool and smooth the surface to achieve a smooth surface.



2 After a sufficient drying time, apply StoCalce Marmorino with the StoCalce Marmorino Finishing Trowel over the entire surface for a spot-smoothed finish. Once the surface has started to harden, slightly compact the surface (surface should not be glossy).



3 Stamp the StoCalce Marmorino with the StoCalce Marmorino Finishing Trowel and a second Sto-Finishing Trowel in an irregular pattern and distribute over the surface until the desired result is achieved.



4 While it is drying, carefully pre-compact the surface with the StoCalce Marmorino Finishing Trowel so that the texture is retained. Make sure that the edge of the tool is clean.



5 After some additional drying time, carefully compact the surface with the StoCalce Marmorino Finishing Trowel until you achieve the desired result. Make sure that the edge of the tool is clean at all times.



6 Mix the StoLook Argento effect powder with the StoLook Wax (add 3 % StoLook Argento). Apply the mixture with the StoCalce Marmorino Finishing Trowel.



7 After the StoLook Wax has dried, polish the surface with a lint-free cloth.

Note

For intense or increased loads, the StoLook Wax forte is recommended.

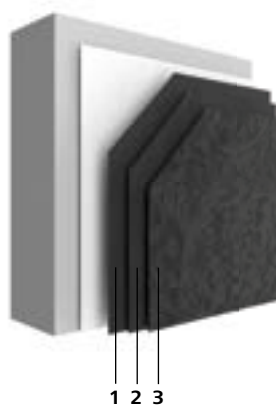


StoCalce Marmorino #04 Patina



Description	• Decorative filler, compacted and textured
Products	• 01326-008 StoCalce Fondo tinted • 01321-023 StoCalce Marmorino tinted
Tools	• 08288-030 Sto-Finishing Trowel • 08219-021 Sto-Effect Roller • 08296-116 Mirka Abranet P180 • 08376-002 StoCalce Marmorino Finishing Trowel
Colour shades shown	• 16280 Architectural Colours
Possible colour shades	• StoCalce Fondo and StoCalce Marmorino have unlimited tintability

System build-up



- 1 — StoCalce Fondo
- 2 — StoCalce Marmorino
- 3 — StoCalce Marmorino

Substrate preparation

Depending on the type and condition of the substrate, apply a levelling coat of quality level 3 (Q3) with StoLevell In Sil. Once it has dried sufficiently, sand, dust off, and prime with StoPrim GT. After drying, apply StoPrep In evenly with the Sto-Malerwalze Standard Langflor, covering the entire surface.



Apply and smooth the StoCalce Fondo to grain size with the Sto-Finishing Trowel.



Then use the Sto-Effect Roller to apply the texture.



Once the texture has dried, sand the surface with Mirka Abranet P180 depending on the desired appearance. Then carefully remove any dust from the surface.



Apply StoCalce Marmorino evenly as a filler base coat with the StoCalce Marmorino Finishing Trowel without forming ridges.



Apply StoCalce Marmorino evenly as a final coat with the StoCalce Marmorino Finishing Trowel.



Compact the surface with the edge of the StoCalce Marmorino Finishing Trowel until the desired gloss level is achieved.

Tip

Warning: If the surface is allowed to dry for too long, the compacting process with the steel edge can lead to unwanted grey abrasion. For larger surfaces, it is therefore recommended that two people carry out the last application cycle.

Note

For intense or increased loads, the StoLook Wax forte is recommended. Enhancement with effect powder is also available as an option.



StoCalce Marmorino #05

Sandstone



Description	• Decorative filler with marble powder aggregates, compacted
Products	<ul style="list-style-type: none"> • 09320-007 StoLevell Calce FS tinted • 01321-024 StoCalce Marmorino natural white • 04252-003 StoLook Punto F nero ebano • 01329-003 StoLook Wax
Tools	<ul style="list-style-type: none"> • 08288-030 Sto-Finishing Trowel • 08288-009 Sto-Finishing Trowel Notched, 6x6 • 08290-016 Sto-Finishing Spatula • 08376-002 StoCalce Marmorino Finishing Trowel • Lint-free cloth
Colour shades shown	• 16015 Architectural Colours
Possible colour shades	<ul style="list-style-type: none"> • StoCalce Marmorino has unlimited tintability • StoLevell Calce FS has limited tintability

System build-up



- 1 — StoLevell Calce FS
- 2 — StoCalce Marmorino with StoLook Punto F
- 3 — StoCalce Marmorino with StoLook Punto F
- 4 — StoLook Wax

Substrate preparation

Depending on the type and condition of the substrate, apply a levelling coat of quality level 2 (Q2) with StoLevell In Fill. Once it has dried sufficiently, sand, dust off, and prime with StoPrim GT. After drying, apply StoPrep In evenly with the Sto-Malerwalze Standard Langflor, covering the entire surface.



1

Apply StoLevell Calce FS with the Sto-Finishing Trowel and use the Sto-Finishing Trowel Notched 6x6 to apply the texture.



2

Carefully smooth the combed texture over the entire surface immediately afterwards using the Sto-Finishing Spatula. Then carefully pre-compact the surface with the StoCalce Marmorino Finishing Trowel. Leave the surface to dry.



3

Mix StoLook Punto F in the colour shade Nero Ebano into the StoCalce Marmorino (add 5 % StoLook Punto F). Apply the mixture with the StoCalce Marmorino Finishing Trowel evenly in a criss-cross pattern. Leave the surface to harden then carefully smooth it.



4

Use the StoCalce Marmorino Finishing Trowel again to apply and tool and smooth the mixture of StoCalce Marmorino and StoLook Punto F over the entire surface without leaving any seams. Leave the texture to harden superficially until the surface becomes matt.



5

Compact the matt surface using the StoCalce Marmorino smoothing trowel until you achieve the desired appearance.



6

Apply StoLook Wax over the entire surface using the StoCalce Marmorino Smoothing Trowel. After a short drying time, polish the surface with a lint-free cloth.

Note

The result can vary depending on how the filler base coat is applied, how compacted the material is, tool size, and tradesman's signature style.



StoCalce Veneziano #01 Classico



Description	• Smoothing filler
Products	• 01326-009 StoCalce Fondo natural white • 04245-003 StoCalce Veneziano natural white • 04252-003 StoLook Punto F nero ebano
Tools	• 08288-030 Sto-Finishing Trowel • 08376-002 StoCalce Marmorino Finishing Trowel
Colour shades shown	• Nero Ebano 5 %
Possible colour shades	• StoCalce Veneziano is tintable with StoLook Punto F

System build-up



- 1 — StoCalce Fondo
- 2 — StoCalce Veneziano with StoLook Punto F
- 3 — StoCalce Veneziano with StoLook Punto F

Substrate preparation

Depending on the type and condition of the substrate, apply a levelling coat of quality level 3 (Q3) with StoLevell In Sil. Once it has dried sufficiently, sand, dust off, and prime with StoPrim GT. After drying, apply StoPrep In evenly with the Sto-Malerwalze Standard Langflor, covering the entire surface.



Apply StoCalce Fondo to grain size as a filler base coat using a Sto-Finishing Trowel and smooth. Leave the surface to dry.



Pour StoLook Punto F in the colour shade Nero Ebano into the StoCalce Veneziano and stir by machine (an addition of 5 % StoLook Punto F corresponds to one container of StoLook Punto F to one container of StoLook Veneziano). Evenly apply the mixture of StoCalce Veneziano and StoLook Punto F to grain size with the Sto-Finishing Trowel, allow time for initial hardening and smooth until burr-free.



Once the surface is dry to the touch (must not stick when touched), smooth the surface with the StoCalce Marmorino Finishing Trowel again.



Once the surface starts to turn lighter in shade during the drying process, apply another layer of the mixture of StoCalce Veneziano and StoLook Punto F.



As the final layer consolidates, compact the surface with the StoCalce Marmorino Finishing Trowel until pore-free.



StoCalce Veneziano #02 Rustico



Description	• Smoothing filler with added texture sand and marble powder aggregates, textured and compacted
Products	<ul style="list-style-type: none"> • 01326-009 StoCalce Fondo natural white • 04245-003 StoCalce Veneziano natural white • 04252-003 StoLook Punto F nero ebano • 04240-001 StoLook Punto Z
Tools	<ul style="list-style-type: none"> • 08288-030 Sto-Finishing Trowel • 08354-011 Sto-Coarse Texturing Roller Cover • 08376-002 StoCalce Marmorino Finishing Trowel
Colour shades shown	• Nero Ebano 10 %
Possible colour shades	• StoCalce Veneziano is tintable with StoLook Punto F

System build-up



- 1 — StoCalce Fondo
2 — StoCalce Veneziano with StoLook Punto F and StoLook Punto Z

Substrate preparation

Depending on the type and condition of the substrate, apply a levelling coat of quality level 3 (Q3) with StoLevell In Sil. Once it has dried sufficiently, sand, dust off, and prime with StoPrim GT. After drying, apply StoPrep In evenly with the Sto-Malerwalze Standard Langflor, covering the entire surface.



Apply StoCalce Fondo to grain size as a filler base coat using a Sto-Finishing Trowel and smooth. Leave the surface to dry.



Stir the StoCalce Veneziano and mix in the StoLook Punto F (10%) in the colour shade Nero Ebano and StoLook Punto Z (max. 30%) as textured grain and stir by machine. Generously apply the mixture with the Sto-Finishing Trowel (1.5 times grain size).



Dimple the entire surface with the Sto-Coarse Texturing Roller Cover in an irregular and non-directional manner.



Once the surface is dry to the touch (must not stick when touched), pre-smooth the surface with the StoCalce Marmorino Finishing Trowel (dimples will be pressed in slightly).



Repeat the compaction process as the drying time elapses until a slightly silk-gloss surface effect is achieved.

Note

As an option, the surface can be enhanced with StoSil Patina.



StoCalce Veneziano #03 Travertino



Description	• Smoothing filler with added texture sand and marble powder aggregates, textured and compacted with wall appearance
Products	<ul style="list-style-type: none"> • 01326-009 StoCalce Fondo natural white • 04245-003 StoCalce Veneziano natural white • 04252-003 StoLook Punto F nero ebano • 04240-001 StoLook Punto Z • 04970-002 StoSil Patina tinted
Tools	<ul style="list-style-type: none"> • 08288-030 Sto-Finishing Trowel • 08376-002 StoCalce Marmorino Finishing Trowel • 17001-013 Kip Fine Crepe 30 mm
Colour shades shown	<ul style="list-style-type: none"> • Nero Ebano 10 % • 16280 Architectural Colours (StoSil Patina)
Possible colour shades	<ul style="list-style-type: none"> • StoCalce Veneziano is tintable with StoLook Punto F • StoSil Patina has limited tintability

System build-up



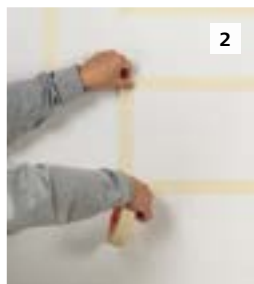
- 1 — StoCalce Fondo
 2 — StoCalce Veneziano with StoLookPunto F and StoLook Punto Z
 3 — StoSil Patina

Substrate preparation

Depending on the type and condition of the substrate, apply a levelling coat of quality level 3 (Q3) with StoLevell In Sil. Once it has dried sufficiently, sand, dust off, and prime with StoPrim GT. After drying, apply StoPrep In evenly with the Sto-Malerwalze Standard Langflor, covering the entire surface.



Apply StoCalce Fondo to grain size as a filler base coat using a Sto-Finishing Trowel and smooth. Leave the surface to dry.



Draw the desired grating onto the dry filler base coat and mask off the individual fields.



Stir the StoCalce Veneziano and StoLook Punto F in the colour shade Nero Ebano, mix in StoLook Punto Z as textured grain and mix again by machine (add 10 % StoLook Punto F and max. 30 % StoLook Punto Z). Apply the mixture to the masked-off fields with the StoCalce Marmorino Finishing Trowel.



Once the layer is dry to the touch, scratch the coated fields with the front side of the StoCalce Marmorino Finishing Trowel.



After another 3 to 5 minutes, smooth and compact the surfaces with the StoCalce Marmorino Finishing Trowel. Repeat the compaction process as the drying time elapses until the desired surface effect is achieved. Carefully remove the adhesive tape so that no injuries occur at the edges.



Then prepare and work the subsequent fields in the same way. Repeat the steps until you have worked all of the fields.



The surface can be further enhanced with a patina or scumbling technique. StoLook Wax (tinted with StoTint Aqua) or StoSil Patina tinted are suitable for this purpose, for example.



StoCalce Veneziano #04

Liscio



Description	• Smoothing filler with marble powder aggregates, compacted and ground
Products	<ul style="list-style-type: none"> • 01326-009 StoCalce Fondo natural white • 04245-003 StoCalce Veneziano natural white • 04252-003 StoLook Punto F nero ebano
Tools	<ul style="list-style-type: none"> • 08288-030 Sto-Finishing Trowel • 08376-002 StoCalce Marmorino Finishing Trowel • 08296-116 Mirka Abranet P180
Colour shades shown	• Nero Ebano 10 %
Possible colour shades	• StoCalce Veneziano is tintable with StoLook Punto F

System build-up



- 1 — StoCalce Fondo
- 2 — StoCalce Veneziano with StoLook Punto F
- 3 — StoCalce Veneziano with StoLook Punto F

Substrate preparation

Depending on the type and condition of the substrate, apply a levelling coat of quality level 3 (Q3) with StoLevell In Sil. Once it has dried sufficiently, sand, dust off, and prime with StoPrim GT. After drying, apply StoPrep In evenly with the Sto-Malerwalze Standard Langflor, covering the entire surface.



Apply StoCalce Fondo to grain size as a filler base coat using a Sto-Finishing Trowel and smooth. Leave the surface to dry.



Stir the StoCalce Veneziano and mix in the StoLook Punto F in the colour shade Nero Ebano and mix by machine again (add 10 % StoLook Punto F). Evenly apply to the mixture to grain size with the Sto-Finishing Trowel, allow time for initial hardening and smooth until burr-free.



Once the surface is dry to the touch (must not stick when touched), smooth the surface with the StoCalce Marmorino Finishing Trowel again.



Once the surface starts to turn lighter in shade during the drying process, apply another layer.



Once the surface is dry to the touch (must not stick when touched), smooth the surface again with the finishing trowel.



As the final layer consolidates, compact the surface with the StoCalce Marmorino Finishing Trowel until pore-free. Repeat this step multiple times until a silk-gloss surface is achieved.

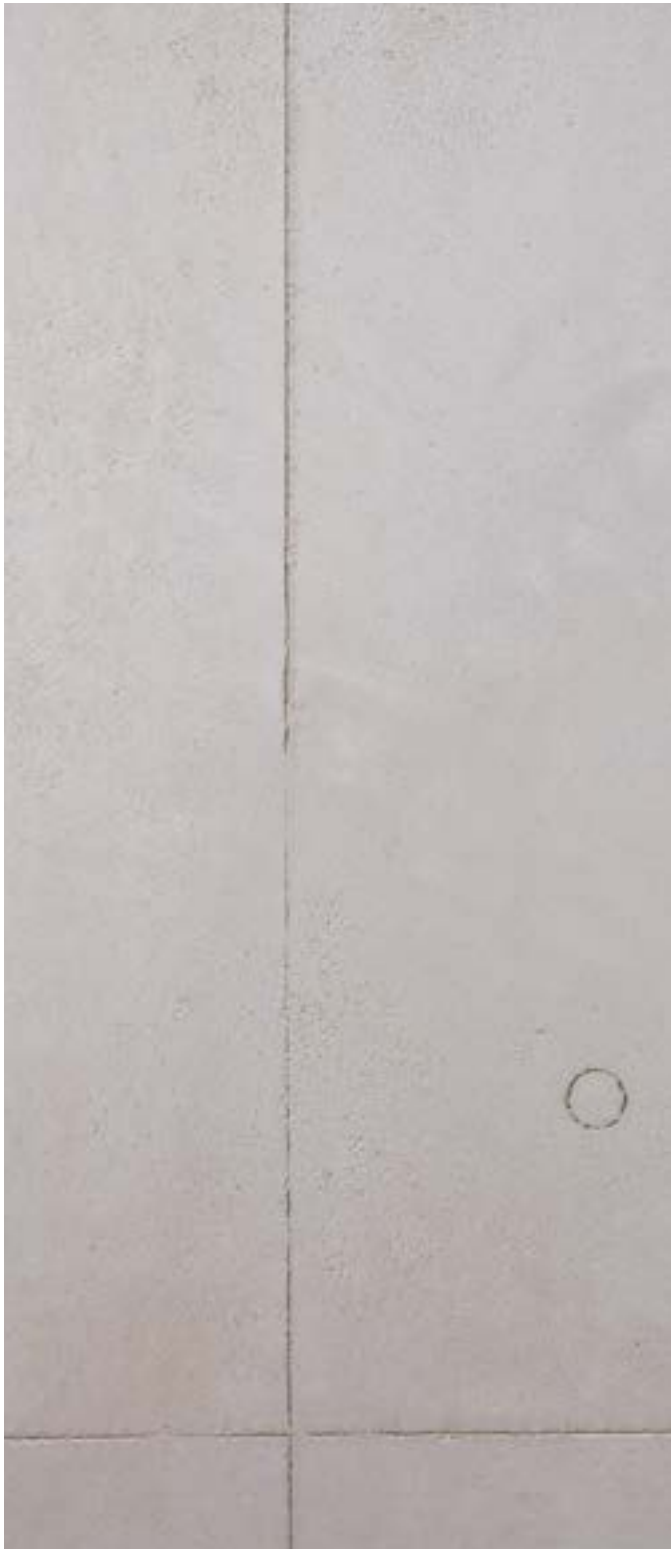


After a sufficient drying time (at least 24 hours), sand with Mirka Abranet P180. Sanding the surface achieves a well-defined stone appearance.



StoCalce Veneziano #05

Concrete appearance



Description	• Smoothing filler with concrete character
Products	<ul style="list-style-type: none"> • 01326-009 StoCalce Fondo natural white • 04245-003 StoCalce Veneziano natural white • 04252-003 StoLook Punto F nero ebano • 04240-001 StoLook Punto Z • 01329-003 StoLook Wax • 02305-002 StoTint Aqua Umbra
Tools	<ul style="list-style-type: none"> • 08288-030 Sto-Finishing Trowel • 08376-002 StoCalce Marmorino Finishing Trowel • 08241-009 Sto-Rubber Float Sponge coarse • Spirit level • 08355-005 Sto-Leaf and Square Tool
Colour shades shown	• Nero Ebano 20 %
Possible colour shades	• For this surface, no alternative colour shades are possible.

System build-up



- 1 — StoCalce Fondo
- 2 — StoCalce Veneziano with StoLook Punto F and StoLook Punto Z
- 3 — StoCalce Veneziano with StoLook Punto F and StoLook Punto Z
- 4 — StoLook Wax with StoTint Aqua

Substrate preparation

Depending on the type and condition of the substrate, apply a levelling coat of quality level 3 (Q3) with StoLevell In Sil. Once it has dried sufficiently, sand, dust off, and prime with StoPrim GT. After drying, apply StoPrep In evenly with the Sto-Malerwalze Standard Langflor, covering the entire surface.



1

Apply StoCalce Fondo to grain size as a filler base coat using a Sto-Finishing Trowel and smooth. Leave the surface to dry.



2

Stir the StoCalce Veneziano and mix in StoLook Punto F in the colour shade Nero Ebano and StoLook Punto Z as textured grain and stir again by machine (add 20 % StoLook Punto F and 10 % StoLook Punto Z). Apply to grain size with the StoCalce Marmorino Finishing Trowel.



3

When the first filler and levelling coat is dry to the touch, apply a second layer to grain size. Partially texture the surface with the Sto-Rubber Float Sponge coarse.



4

For the joints, place a straight stop (such as a spirit level) lightly on the surface. Scratch joints into the surface with the Sto-Leaf and Square Tool by applying light pressure.

For the clamping holes, press the handle end of a roller frame into the defined points.



5

Let the surface dry and compact it with the edge of the StoCalce Marmorino Finishing Trowel. Leave the surface to dry.



6

Tint the StoLook Wax with StoTint Aqua Umbra. Apply the wax using the Sto-Rubber Float Sponge coarse, working in circular motions similar to a figure of eight.

Note

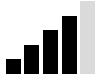
For this surface, the colour shades are pre-defined! Define the intensity of the desired tinting using samples, e.g. StoTint Aqua Umbra.

Blow-holes, clamping holes or formwork joints can be individually integrated as design elements. These elements bring order or rhythm to the wall area, depending on the arrangement. The surface with a concrete character is given particular depth and artificial ageing (patina) if a tinted wax is applied as a finish over the recesses, blow-holes, joints etc.



StoCalce Veneziano #06

Caiman

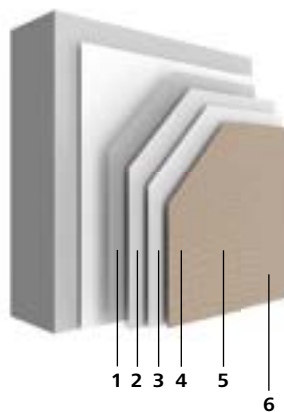


Performance grade 4



Description	• Smoothing filler with crocodile skin appearance
Products	<ul style="list-style-type: none"> • 00828-043 StoColl Tap • 02527-014 StoTap Pro 300 P • 00206-006 StoColor Sil In • 04245-003 StoCalce Veneziano • 04970-002 StoSil Patina tinted • 04970-001 StoSil Patina transparent • 01329-003 StoLook Wax • 04256-001 StoLook Oro
Tools	<ul style="list-style-type: none"> • 17800-030 Sto-FineCoat Roller • 08288-030 Sto-Finishing Trowel • 08288-008 Sto-Finishing Trowel Notched, 4x4 • 08290-016 Sto-Finishing Spatula • 0831-005 StoLook Caiman Rocker • 08296-114 Mirka Abranet P120 • 08241-010 Sto-Rubber Float Sponge fine • 08241-009 Sto-Rubber Float Sponge coarse
Colour shades shown	• 16280 Architectural Colours
Possible colour shades	<ul style="list-style-type: none"> • StoCalce Veneziano is tintable with StoLook Punto F • StoSil Patina has limited tintability

System build-up



- 1 — StoColl Tap
- 2 — StoTap Pro 300 P
- 3 — StoColor Sil In
- 4 — StoCalce Veneziano
- 5 — StoSil Patina
- 6 — StoLook Wax with StoLook Oro



View this guideline as a film:
Simply scan the QR code or go to the YouTube channel.

Substrate preparation

Depending on the type and condition of the substrate, apply a levelling coat of quality level 3 (Q3) with StoLevell In Sil. Once it has dried sufficiently, sand, dust off, and prime with StoPrim GT.



1

Apply a sufficient, even amount of StoColl Tap to the wall in a width of 1–2 strips. Lay the StoTap Pro 300 P wallpaper into the wet adhesive bed without bubbles, ensuring that it abuts. Immediately wipe any adhesive off the surface with a damp, clean cloth. The wallpaper has no soaking time. Leave the surface to dry.



2

Apply a full, even coating of StoColor Sil In to the dried wallpaper using the Sto-FineCoat Roller. Leave the surface to dry.



3

Apply StoCalce Veneziano with the Sto-Finishing Trowel, then immediately texture with the Sto-Finishing Trowel Notched, 4x4. Immediately after texturing, carefully smooth the combed texture over the entire surface with the Sto-Finishing Spatula.



4

Use the StoLook Caiman Rocker to work on the freshly coated wall area. To do this, carefully press the texture rocker into the material and then remove it. The texture rocker and the material must be coated with a fine film of water. Leave the surface to dry.



5

Gently sand the prepared surface with Mirka Abranet P120 and dust off well. The relief should not be very deep.



6

Mix StoSil Patina tinted with StoSil Patina transparent in equal parts and stir well. Apply the mixture in a criss-cross pattern with the Sto-FineCoat Roller. Distribute the patina over the surface with the Sto-Rubber Float Sponge fine in circular motions similar to a figure of eight wet-on-wet.



7

Mix the StoLook Oro effect powder with the StoLook Wax (add 3% StoLook Argento). Apply the mixture as a thin coating with the Sto-Rubber Float Sponge coarse in a glazing spotting technique. Apply spots spaced 50 cm apart and then immediately spread these over the entire area. After a short drying time, polish the surface with a lint-free cloth.

Note

Texturing in a directional, free, full-surface, or partial manner or using different colours of lasures and tinted waxes produces more abstract or more natural results.



StoColor Metallic #01

Metallic Ballotini



Description	• Metallic effect coating with glass bead aggregate
Products	<ul style="list-style-type: none"> • 00024-002 StoColor Opticryl Matt tinted • 00319-003 StoColor Metallic tinted • 09538-002 StoLook Ballotini 180–300 mm • 17800-030 Sto-FineCoat Roller
Tools	<ul style="list-style-type: none"> • 17800-030 Sto-FineCoat Roller • 17106-003 Sto-Wide Brush, oval
Colour shades shown	• 37800M StoColor Metallic
Possible colour shades	• In accordance with StoColor Metallic colour fan

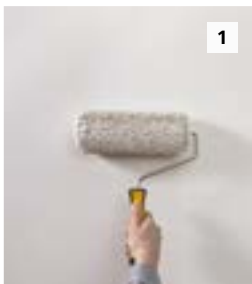
System build-up



- 1 — StoColor Opticryl Matt
- 2 — StoColor Opticryl Matt
- 3 — StoColor Metallic with StoLook Ballotini
- 4 — StoColor Metallic with StoLook Ballotini

Substrate preparation

Depending on the type and condition of the substrate, apply a levelling coat of quality level 3 (Q3) with StoLevell In Sil. Once it has dried sufficiently, sand, dust off, and prime with StoPrim GT.



1

Apply StoColor Opticryl Matt twice in the appropriate StoColor Metallic substrate colour shade with the Sto-FineCoat Roller.



2

Mix StoLook Ballotini 0.3 with StoColor Metallic (add 30 % StoLook Ballotini). Brush the mixture onto the surface with the Sto-Wide Brush, oval in criss-cross strokes. Leave the surface to dry.



3

Brush a mixture of StoColor Metallic and 30 % StoLook Ballotini onto the surface again with the Sto-Wide Brush, oval in criss-cross strokes. Leave the surface to dry.

Note

For the undercoat, order StoColor Opticryl Matt in the appropriate StoColor Metallic colour shade.

Individual surface results can be achieved by using other brushes and texturing directions.



StoColor Opticryl Matt #01 Earth



Description	• Interior acrylate paint with cracked appearance
Products	<ul style="list-style-type: none"> • 00828-043 StoColl Tap • 02527-001 StoTap Pro 100 P • 00024-002 StoColor Opticryl Matt tinted • 00828-026 StoColl Tex
Tools	<ul style="list-style-type: none"> • 17800-030 Sto-FineCoat Roller • 17811-014 Sto-Paint Roller Standard Langflor
Colour shades shown	<ul style="list-style-type: none"> • 16280 Architectural Colours (StoColor Opticryl Matt basic shade) • 14122 Architectural Colours (StoColor Opticryl Matt top coat)
Possible colour shades	• StoColor Opticryl Matt has unlimited tintability

System build-up



- 1 — StoColl Tap
- 2 — StoTap Pro 100 P
- 3 — StoColor Opticryl Matt
- 4 — StoColl Tex
- 5 — StoColor Opticryl Matt



View this guideline as a film:
Simply scan the QR code or go to the YouTube channel.

Substrate preparation

Depending on the type and condition of the substrate, apply a levelling coat of quality level 3 (Q3) with StoLevell In Sil. Once it has dried sufficiently, sand, dust off, and prime with StoPrim GT.



Apply a sufficient, even amount of StoColl Tap to the wall in a width of 1–2 strips. Lay the StoTap Pro 100 P wallpaper into the wet adhesive bed without bubbles, ensuring that it abuts. Immediately wipe any adhesive off the surface with a damp, clean cloth. The wallpaper has no soaking time. Leave the surface to dry.



Apply a full, even coating of StoColor Opticryl Matt to the dried wallpaper using the Sto-FineCoat Roller. Leave the surface to dry.



Use the Sto-Paint Roller Standard Langflor to roll a generous coating of StoColl Tex in a criss-cross pattern. Leave the surface to dry. This step will need to be repeated at least once depending on the level of crack formation required. Leave the surface to dry.



Use the Sto-Malerwalze Standard Langflor to apply a generous and even coating of StoColor Opticryl Matt in a criss-cross pattern. Leave the surface to dry.

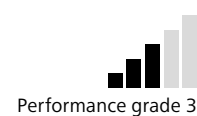
Note

The results or crack formation on this surface can be influenced and controlled as required: firstly by the amount of crack forming agent and also by the finish. The desired crack formation and the choice of colour shade can produce results that are either intense in colour, rich in contrast, and bright, or natural and subtle like bark, leather, or skin.



StoDecosit #01

Dune



Description	• Dispersion silicate plaster, textured
Products	• 09620-011 StoDecosit MP tinted
Tools	• 08288-030 Sto-Finishing Trowel • 17106-003 Sto-Wide Brush, oval
Colour shades shown	• 16287 Architectural Colours
Possible colour shades	• StoDecosit MP has limited tintability

System build-up



1 — StoDecosit MP

Substrate preparation

Depending on the type and condition of the substrate, apply a levelling coat of quality level 2 (Q2) with StoLevell In Fill. Once it has dried sufficiently, sand, dust off, and prime with StoPrim GT. After drying, apply StoPrep In evenly with the Sto-Malerwalze Standard Langflor, covering the entire surface.



Apply StoDecosit MP evenly in a criss-cross pattern with the Sto-Finishing Trowel.



Then use the Sto-Finishing Trowel to smooth the render while it is still wet in a diagonal and dune-like pattern.



Smooth the hardened render in the direction of the texture with a slightly damp Sto-Wide Brush, oval. Use as little water as possible. Guide the wide brush over the rendered surface at a flat angle. Leave the surface to dry.



StoDecosit #02

Linear 1

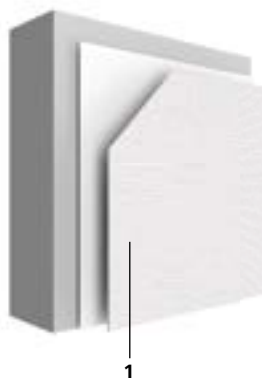


Performance grade 3



Description	• Dispersion silicate plaster, textured in brush texture technique
Products	• 09620-010 StoDecosit R 1.5 white
Tools	• 08288-030 Sto-Finishing Trowel • 08218-003 Sto-Texturing Brush
Colour shades shown	• white
Possible colour shades	• StoDecosit R has limited tintability

System build-up



1 — StoDecosit R

Substrate preparation

Depending on the type and condition of the substrate, apply a levelling coat of quality level 2 (Q2) with StoLevell In Fill. Once it has dried sufficiently, sand, dust off, and prime with StoPrim GT. After drying, apply StoPrep In evenly with the Sto-Malerwalze Standard Langflor, covering the entire surface.



Apply StoDecosit K with the Sto-Finishing Trowel slightly over the grain size. Only apply finishing render to the area that will be textured immediately.



Texture the fresh render with the Sto-Texturing Brush in the desired direction. Hold the Sto-Texturing Brush at an acute angle without applying pressure, guiding it over the render in short strokes (60–80 cm). Tool application points may be visible in the final result. Leave the surface to dry.

Note

After a few brushstrokes, tap the texturing brush to remove any excess material.



StoDecosit #03

Linear 2



Description	• Dispersion silicate plaster, textured and smoothed in brush texture technique
Products	• 09620-011 StoDecosit MP 0.5 tinted
Tools	• 08288-030 Sto-Finishing Trowel • 08218-003 Sto-Texturing Brush • 08283-001 Sto-Spring Steel Spatula
Colour shades shown	• 16285 Architectural Colours
Possible colour shades	• StoDecosit MP has limited tintability

System build-up



1 — StoDecosit MP

Substrate preparation

Depending on the type and condition of the substrate, apply a levelling coat of quality level 2 (Q2) with StoLevell In Fill. Once it has dried sufficiently, sand, dust off, and prime with StoPrim GT. After drying, apply StoPrep In evenly with the Sto-Malerwalze Standard Langflor, covering the entire surface.



Apply StoDecosit MP with the Sto-Finishing Trowel slightly over the grain size. Only apply finishing render to the area that will be textured immediately.



Texture the fresh render with the Sto-Texturing Brush in the desired direction. Hold the Sto-Texturing Brush at an acute angle without applying pressure, guiding it over the render in short strokes (60–80 cm). Tool application points may be visible in the final result. Make sure to distribute well. Leave the surface to dry.



Carefully smooth the surface with a Sto-Spring Steel Spatula.

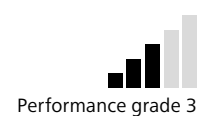
Note

After a few brushstrokes, tap the texturing brush to remove any excess material.



StoDecosit #04

Bark technique



Description	• Dispersion silicate plaster, textured in spotting technique
Products	• 09620-011 StoDecosit MP tinted
Tools	• 08288-030 Sto-Finishing Trowel • 08241-006 Sto-Velcro Float Handle • 08241-014 Sto-Moltopren® Sponge
Colour shades shown	• 16284 Architectural Colours (StoDecosit MP full-faced) • 16282 Architectural Colours (StoDecosit MP, spotting)
Possible colour shades	• StoDecosit MP has limited tintability

System build-up



- 1 — StoDecosit MP
2 — StoDecosit MP
3 — StoDecosit MP (spotted coating)

Substrate preparation

Depending on the type and condition of the substrate, apply a levelling coat of quality level 3 (Q3) with StoLevell In Sil. Once it has dried sufficiently, sand, dust off, and prime with StoPrim GT. After drying, apply StoPrep In evenly with the Sto-Malerwalze Standard Langflor, covering the entire surface.



1 Apply StoDecosit MP to grain size as a filler base coat using a Sto-Finishing Trowel and smooth. Leave the surface to dry.



2 Apply StoDecosit MP over the full surface with the Sto-Finishing Trowel.



3 When the filler base coat has dried a little, use a slightly damp (not wet) Sto-Moltopren® Sponge on a Sto-Klett-Trägerbrett to smooth it by making circular motions similar to a figure of eight and applying light pressure. Level out any ridges and tips and smooth the surface. Leave the surface to dry.



4 Apply StoDecosit MP coarsely in individual spots. Immediately distribute the spots. Without using edges, smooth the spots into irregular spots in circular motions using the Sto-Finishing Trowel held very flat.



5 When the spot-smoothed finish has dried a little, use a slightly damp (not wet) Sto-Moltopren® Sponge to smooth it by making circular motions similar to a figure of eight and applying light pressure. Level out any ridges and tips and smooth the surface. Leave the surface to dry. As an option, the surface can be enhanced with StoSil Patina.

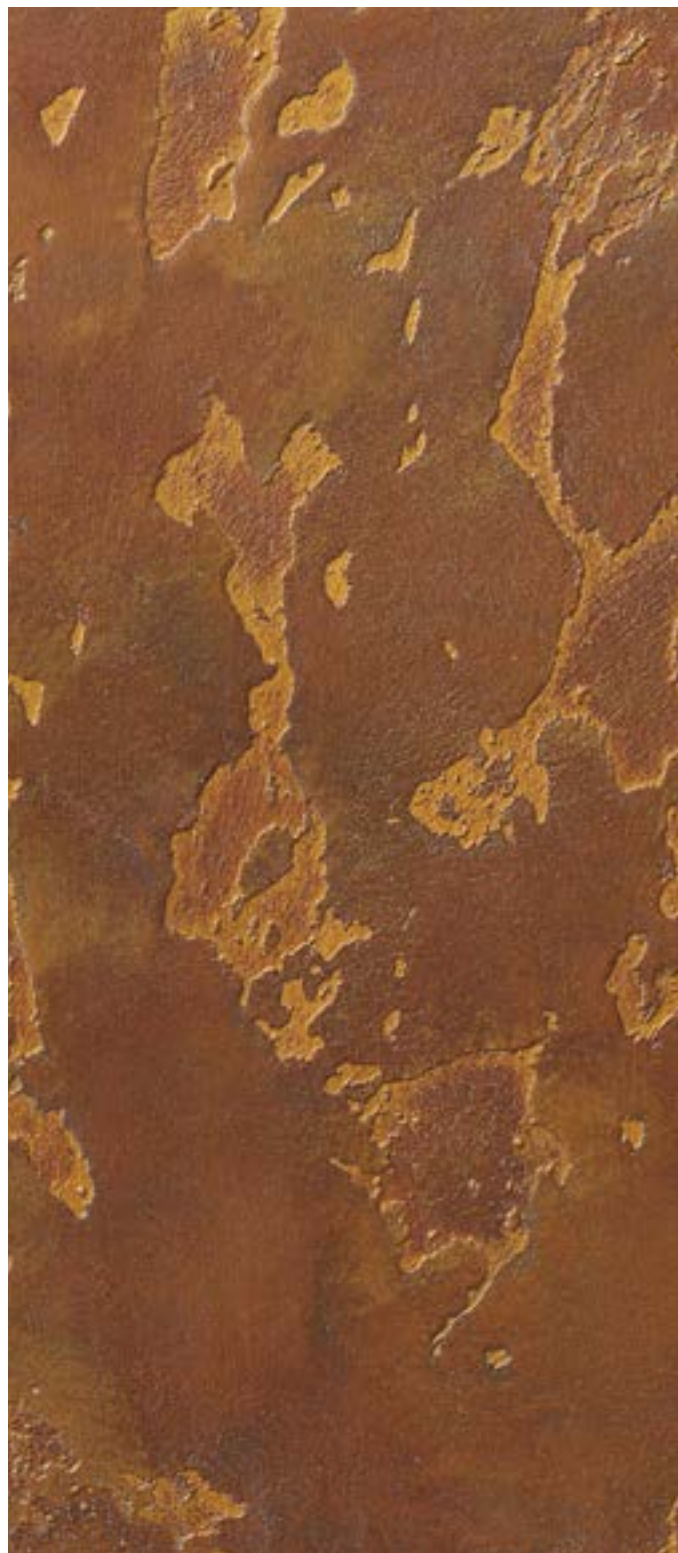


StoDecosit #05

Rust appearance



Performance grade 4



Description	• Dispersion silicate plaster with rust appearance
Products	• 09620-011 StoDecosit MP tinted • 00319-003 StoColor Metallic tinted
Tools	• 08288-030 Sto-Finishing Trowel • 08241-006 Sto-Velcro Float Handle • 08241-014 Sto-Moltopren® Sponge • 08241-010 Sto-Rubber Float Sponge fine
Colour shades shown	• 32241 StoColor System (StoDecosit MP) • 37822M StoColor Metallic, 37831M StoColor Metallic and 37809M StoColor Metallic
Possible colour shades	• For this surface, no alternative colour shades are possible.

System build-up



- 1 — StoDecosit MP
2 — StoDecosit MP (spotted coating)
3 — StoColor Metallic (3x)



View this guideline as a film:
Simply scan the QR code or go to the YouTube channel.

Substrate preparation

Depending on the type and condition of the substrate, apply a levelling coat of quality level 3 (Q3) with StoLevell In Sil. Once it has dried sufficiently, sand, dust off, and prime with StoPrim GT. After drying, apply StoPrep In evenly with the Sto-Malerwalze Standard Langflor, covering the entire surface.



1

Apply StoDecosit MP over the full surface with the Sto-Finishing Trowel.



2

When the filler base coat has dried a little, use a slightly damp (not wet) Sto-Moltopren® Sponge on a Sto-Velcro Float Handle to smooth it by making circular motions similar to a figure of eight and applying light pressure. Level out any ridges and tips and smooth the surface. Leave the surface to dry.



3

Apply StoDecosit MP in individual spots. Without using edges, smooth the spots into irregular spots in circular motions using the Sto-Finishing Trowel held very flat.



4

When the spot-smoothed finish has dried a little, use a slightly damp (not wet) Sto-Moltopren® Sponge to float-finish it by making circular motions similar to a figure of eight and applying light pressure. Level out any ridges and tips. Leave the surface to dry.



5

Dilute StoColor Metallic colour shade (37822M) approx. 15 % with water. Apply the material evenly using the Sto-Malerwalze Standard Kurzflor and smooth it using the Sto-Rubber Float Sponge fine.



6

Dilute the second StoColor Metallic colour shade (37831M) approx. 50 % with water. Apply the material thinly using a glazing spotting technique. Apply metallic spots, spaced 50 cm apart, with the Sto-Rubber Float Sponge fine and then immediately spread these across the entire surface. Coat across the full surface of the elevations with the metallic lasure. Leave out the edges in the recesses.



7

Dilute the third StoColor Metallic colour shade (37809M) up to approx. 100 % with water. Apply the material very thinly using a glazing spotting technique. Apply metallic spots, spaced 50 cm apart, with the Sto-Rubber Float Sponge fine. Immediately distribute the spots.

Note

The colour shades are pre-defined. That is the only way to ensure that the desired rusty appearance is achieved.

Rust is a product of corrosion on iron or steel, caused by oxidation combined with water. Different environmental factors cause different rust grades or rust surfaces on iron or steel. Depending on how well the spotting technique has been executed and the different metallic lasures have been applied, a wide range of surfaces with various rusty appearances can be achieved using the technique described here.



StoDecosit #06

Stencil plaster



Description	• Dispersion silicate plaster in stencil technique
Products	• 00030-001 StoColor Opticryl Gloss white • 00872-006 StoPrep In tinted • 09620-003 StoDecosit K 1.5 tinted
Tools	• 17800-030 Sto-FineCoat Roller • 17003-015 Kip 3808 Washi Tape in different widths • 08288-030 Sto-Finishing Trowel • 08289-001 Sto-Finishing Trowel Plastic
Colour shades shown	• 35403 StoColor System
Possible colour shades	• StoColor Opticryl Gloss has unlimited tintability • StoPrep In and StoDecosit K have limited tintability

System build-up



- 1 — StoColor Opticryl Gloss
- 2 — StoColor Opticryl Gloss
- 3 — StoPrep In
- 4 — StoDecosit K 1.5



View this guideline as a film:
Simply scan the QR code or go to the YouTube channel.

Substrate preparation

Depending on the type and condition of the substrate, apply a levelling coat of quality level 3 (Q3) with StoLevell In Sil. Once it has dried sufficiently, sand, dust off, and prime with StoPrim GT.



1

Apply StoColor Opticryl Gloss twice over the entire surface with the Sto-FineCoat Roller. Leave the surface to dry.



2

Mark and mask the appropriate strips.

Tip: Number the masked strips according to the masking sequence. Different widths of masking tape will create an additional effect.



3

To prevent the subsequent coating material from running, apply StoColor Opticryl Gloss to the edges of the masking tape.



4

Apply StoPrep In with the Sto-FineCoat Roller. Leave the surface to dry.



5

Apply StoDecosit K with the Sto-Finishing Trowel to grain size.



6

Float the material with the Sto-Finishing Trowel Plastic by making motions in a figure of eight.



7

Carefully remove the masked strips according to the numbered sequence. Leave the surface to dry.



8

Carefully break, smooth and clean the edges of the masking tape.

Note

Make sure that there is an appropriate ratio of concealed and rendered surfaces. It is therefore advisable to plan and sketch the coating of the wall areas carefully before starting work.

Optimal technique for partially retaining smooth existing coatings (e.g. smoothing techniques) and integrating them into the new room design.



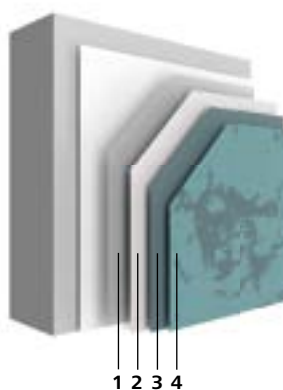
StoDecosit #07

Spotted mesh



Description	<ul style="list-style-type: none"> Dispersion silicate plaster on glass-fibre wall covering in spotting technique
Products	<ul style="list-style-type: none"> 00828-026 StoColl Tex 02520-003 StoTex Classic 215 S Fine 00282-002 StoLook Texture F tinted 09620-011 StoDecosit MP tinted
Tools	<ul style="list-style-type: none"> 17800-030 Sto-FineCoat Roller 08288-030 Sto-Finishing Trowel 08241-006 Sto-Velcro Float Handle 08241-014 Sto-Moltopren® Sponge
Colour shades shown	<ul style="list-style-type: none"> 35430 StoColor System (StoLook Texture F) 35403 StoColor System (StoDecosit MP)
Possible colour shades	<ul style="list-style-type: none"> StoDecosit MP has limited tintability StoLook Texture F has unlimited tintability

System build-up



- 1 — StoColl Tex
- 2 — StoTex Classic 215 S
- 3 — StoLook Texture F
- 4 — StoDecosit MP

Substrate preparation

Depending on the type and condition of the substrate, apply a levelling coat of quality level 3 (Q3) with StoLevell In Sil. Once it has dried sufficiently, sand, dust off, and prime with StoPrim GT.



1

Apply a sufficient, even amount of StoColl Tex to the wall in a width of 1–2 strips. Adjust the consistency of the adhesive to suit the mesh. Dilute with water if necessary.

Place StoTex Classic 215 S Fine in the wet adhesive bed without bubbles, ensuring that it abuts. Leave the surface to dry.



2

Apply StoLook Texture F in a criss-cross pattern with the Sto-FineCoat Roller. Leave the surface to dry.



3

Apply StoDecosit MP in the form of coarse spots. Decant the material onto the surface and smooth into a spot with the Sto-Finishing Trowel held at an acute angle. Layer thickness of the spotted coating approx. 1–1.5 mm.



4

Smooth the individual spots and transitions with a slightly damp (not wet) Sto-Moltopren® Sponge so they are pore-free. Leave the surface to dry.

Note

This technique can be used to integrate existing glass-fibre wall coverings into a new room design. A wide range of surface results can be achieved with different colour choices and different methods of applying the spotted coating. StoDecosit MP is a mineral material and produces a natural mottling effect when float-finished.

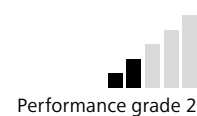
Recommendation

The surface results are heavily dependent on the tradesman's signature style. It is therefore advisable to have sample surface areas completed first.



StoLevell Calce FS #01

Liscio



Description	• Functional filler, smoothed and compacted
Products	• 09320-007 StoLevell Calce FS tinted
Tools	• 08288-030 Sto-Finishing Trowel • 08376-002 StoCalce Marmorino Finishing Trowel
Colour shades shown	• Nero Ebano 20
Possible colour shades	• StoLevell Calce FS has limited tintability

System build-up



- 1 — StoLevell Calce FS
- 2 — StoLevell Calce FS
- 3 — StoLevell Calce FS

Substrate preparation

Depending on the type and condition of the substrate, apply a levelling coat of quality level 2 (Q2) with StoLevell In Fill. Once it has dried sufficiently, sand, dust off, and prime with StoPrim GT. After drying, apply StoPrep In evenly with the Sto-Malerwalze Standard Langflor, covering the entire surface.

Note

StoLevell Calce FS can also be tinted with StoLook Punto F for techniques of this type.



Apply StoLevell Calce FS to grain size as a filler base coat using a Sto-Finishing Trowel and smooth. Leave the surface to dry.



Apply StoLevell Calce FS as a scratch coat in a criss-cross pattern using the Sto-Finishing Trowel, and tool and smooth it. Leave to harden until it is dry to the touch.



Again apply StoLevell Calce FS in the same colour shade as a scratch coat in a criss-cross pattern using the StoCalce Marmorino Smoothing Trowel, and tool and smooth.

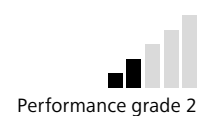


Compact the scratch coat as soon as it is dry to the touch using the StoCalce Marmorino Finishing Trowel until the desired appearance is achieved. Leave to harden.



StoLevell Calce FS #02

Concrete appearance



Description	• Functional filler with concrete character
Products	• 09320-007 StoLevell Calce FS tinted
Tools	• 08288-030 Sto-Finishing Trowel • 08376-002 StoCalce Marmorino Finishing Trowel • 08355-005 Sto-Leaf and Square Tool
Colour shades shown	• Nero Ebano 20
Possible colour shades	• StoLevell Calce FS has limited tintability

System build-up



- 1 — StoLevell Calce FS
- 2 — StoLevell Calce FS
- 3 — StoLevell Calce FS

Substrate preparation

Depending on the type and condition of the substrate, apply a levelling coat of quality level 2 (Q2) with StoLevell In Fill. Once it has dried sufficiently, sand, dust off, and prime with StoPrim GT. After drying, apply StoPrep In evenly with the Sto-Malerwalze Standard Langflor, covering the entire surface.

Note

StoLevell Calce FS can also be tinted with StoLook Punto F for techniques of this type.

Blow-holes, clamping holes or formwork joints can be individually integrated as design elements. These elements bring order or rhythm to the wall area, depending on the arrangement.



Apply StoLevell Calce FS to grain size as a filler base coat using a Sto-Finishing Trowel and smooth. Leave the surface to dry.



Apply StoLevell Calce FS as a scratch coat in a criss-cross pattern using the Sto-Finishing Trowel, and tool and smooth it. Leave to harden until it is dry to the touch.



Again apply StoLevell Calce FS in the same colour shade as a scratch coat in a criss-cross pattern using the StoCalce Marmorino Smoothing Trowel, and tool and smooth.



Compact the scratch coat as soon as it is dry to the touch using the StoCalce Marmorino Finishing Trowel until the desired appearance is achieved. Leave to harden.



StoLevell Calce FS #03

Calce Erosa



Description	<ul style="list-style-type: none"> • Functional filler with natural sand and free-style textured render, washed
Products	<ul style="list-style-type: none"> • 09320-008 StoLevell Calce FS natural white • 09217-003 StoCalce Activ MP 1.0 • 04399-002 StoEffect Terrazzo natural • 04250-003 StoLook Punto F giallo mori
Tools	<ul style="list-style-type: none"> • 08255-001 Sto-Adjustable Notched Trowel • 08373-001 Sto-Notched Blade C2 • 08290-015 Sto-Finishing Spatula with soft grip, rounded • 18876-002 Sto-Terrazzo-Effect Pistole • 17818-001 Sto-Rolle Terrazzo Effect • 08288-030 Sto-Finishing Trowel • 08241-010 Sto-Rubber Float Sponge fine • 08301-001 StoLook Sponge Float
Colour shades shown	<ul style="list-style-type: none"> • Giallo Mori 20%
Possible colour shades	<ul style="list-style-type: none"> • StoLevell Calce FS has limited tintability • StoCalce Activ MP is only tintable with StoLook Punto F marble powders

System build-up



- 1 — StoLevell Calce FS
- 2 — StoLevell Calce FS
- 3 — StoEffect Terrazzo
- 4 — StoCalce Activ MP

Substrate preparation

Depending on the type and condition of the substrate, apply a levelling coat of quality level 2 (Q2) with StoLevell In Fill. Once it has dried sufficiently, sand, dust off, and prime with StoPrim GT. After drying, apply StoPrep In evenly with the Sto-Malerwalze Standard Langflor, covering the entire surface.



1 Apply StoLevell Calce FS to grain size as a filler base coat using a Sto-Finishing Trowel and smooth. Leave the surface to dry.



2 Apply StoLevell Calce FS with the Sto-Adjustable Notched Trowel C2 and texture.

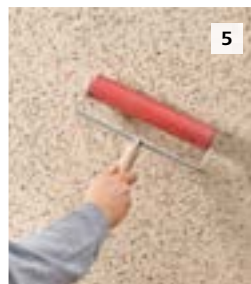


3 Then smooth with the Sto-Finishing Spatula.



4 Immediately afterwards, blow the StoEffect Terrazzo natural sand mixture into the render while it is still wet using the Sto-Terrazzo-Effect Pistole, working from top to bottom in gentle circular movements similar to a figure of eight. Leave to harden until it feels dry to the back of the hand.

Important: Before starting work, cover the floor and any adjacent surfaces.



5 Use the Sto-Rolle Terrazzo Effect to press the sand mixture into the soft render. Use a finishing trowel in areas that are difficult to reach. Leave the surface to dry.



6 Using the Sto-Finishing Trowel, apply StoCalce Activ MP over the pressed-in sand mixture, ensuring light coverage. Leave to harden until it is dry to the touch.



7 Wash the StoEffect Terrazzo natural sand mixture out of the surface again with a slightly damp Sto-Rubber Float Sponge fine. Regularly clean the Sto-Rubber Float Sponge fine with clear water. Leave to harden until it is dry to the touch.



8 Float-finish the surface with an almost dry StoLook Sponge Float. Regularly clean the Sponge Float with clear water. Leave to dry.

Note

StoCalce Activ MP is only tintable with marble powders (StoLook Punto F) based on natural colours.

The washout process can cause colour changes and spots that give the surface its unique character.



StoLevell Calce FS #04 Linear 1



Description	• Functional filler, textured and smoothed in comb texture technique
Products	• 09320-007 StoLevell Calce FS tinted
Tools	• 08288-030 Sto-Finishing Trowel • 08288-009 Sto-Finishing Trowel Notched, 6x6 • 08283-001 Sto-Spring Steel Spatula
Colour shades shown	• Nero Ebano 20
Possible colour shades	• StoLevell Calce FS has limited tintability

System build-up



- 1 — StoLevell Calce FS
2 — StoLevell Calce FS

Substrate preparation

Depending on the type and condition of the substrate, apply a levelling coat of quality level 2 (Q2) with StoLevell In Fill. Once it has dried sufficiently, sand, dust off, and prime with StoPrim GT. After drying, apply StoPrep In evenly with the Sto-Malerwalze Standard Langflor, covering the entire surface.



Apply StoLevell Calce FS to grain size as a filler base coat using a Sto-Finishing Trowel and smooth. Leave the surface to dry.



As soon as the surface is dry, apply a sufficient quantity of StoLevell Calce FS again with the Sto-Finishing Trowel. Only apply finishing render to the area that will be textured immediately.



Texture the fresh render with the Sto-Finishing Trowel Notched, 6 x 6 in the desired direction. Hold the Sto-Finishing Trowel Notched, 6 x 6 at an acute angle without applying pressure, guiding it over the render in short strokes (60–80 cm). Tool application points may be visible in the final result.



Carefully smooth the surface with a Sto-Spring Steel Spatula until the desired appearance is achieved.



StoLevell Calce FS #05

Linear 2



Performance grade 4



Description	• Functional filler with natural sand, textured and smoothed in comb texture technique
Products	• 09320-007 StoLevell Calce FS tinted • 04399-002 StoEffect Terrazzo natural
Tools	• 08288-030 Sto-Finishing Trowel • 08255-002 Sto-Notched Trowel 10x10 • 08289-001 Sto-Finishing Trowel Plastic • 18876-002 Sto-Terrazzo-Effect Pistole
Colour shades shown	• Nero Ebano 20
Possible colour shades	• StoLevell Calce FS has limited tintability

System build-up



- 1 — StoLevell Calce FS
- 2 — StoLevell Calce FS
- 3 — StoEffect Terrazzo

Substrate preparation

Depending on the type and condition of the substrate, apply a levelling coat of quality level 2 (Q2) with StoLevell In Fill. Once it has dried sufficiently, sand, dust off, and prime with StoPrim GT. After drying, apply StoPrep In evenly with the Sto-Malerwalze Standard Langflor, covering the entire surface.



Apply StoLevell Calce FS to grain size as a filler base coat using a Sto-Finishing Trowel and smooth. Leave the surface to dry.



As soon as the surface is dry, apply a sufficient quantity of StoCalce FS again with the Sto-Notched Trowel, 10x10. Only apply finishing render to the area that will be textured immediately.



Texture the fresh render with the Sto-Notched Trowel, 10x10 in the desired direction. Hold the Sto-Notched Trowel, 10x10 at an acute angle without applying pressure, guiding it over the render in short strokes (60–80 cm). Tool application points may be visible in the final result.



Blow the granulate onto the fresh render by making circular motions with the Sto-Hopper Gun.

Important: Before starting work, cover the floor and any adjacent surfaces.



Smooth the surface using the Sto-Finishing Trowel Plastic until the desired appearance is achieved.



StoLevell Calce FS #06

Calce Fine



Description	• Functional filler with marble powder aggregates, partially textured and compacted
Products	• 09320-008 StoLevell Calce FS natural white • 04254-003 StoLook Punto F coccio pesto
Tools	• 08255-001 Sto-Adjustable Notched Trowel • 08373-001 Sto-Notched Blade C2 • 08219-006 Sto-Relief Roller Cover "oak" • 08376-002 StoCalce Marmorino Finishing Trowel • 08290-015 Sto-Finishing Spatula
Colour shades shown	• Coccio Pesto 20 %
Possible colour shades	• StoLevell Calce FS has limited tintability

System build-up



- 1 — StoLevell Calce FS
2 — StoLevell Calce FS

Substrate preparation

Depending on the type and condition of the substrate, apply a levelling coat of quality level 2 (Q2) with StoLevell In Fill. Once it has dried sufficiently, sand, dust off, and prime with StoPrim GT. After drying, apply StoPrep In evenly with the Sto-Malerwalze Standard Langflor, covering the entire surface.



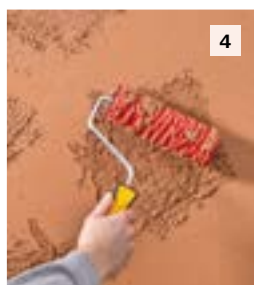
1 Apply StoLevell Calce FS to grain size as a filler base coat using a Sto-Finishing Trowel and smooth. Leave the surface to dry.



2 Apply and comb the StoLevell Calce FS with the rust-free Sto-Adjustable Notched Trowel and the Sto-Notched Blade C2.



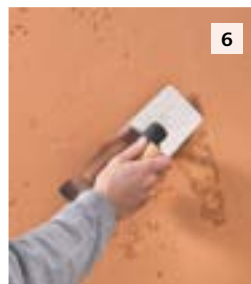
3 Then smooth with the Sto-Finishing Spatula.



4 Then partially texture the surface with the Sto-Relief Roller Cover "oak" to hint at the blow-holes. Leave the surface to harden slightly.



5 Smooth the surface with the edge of the StoCalce Marmorino Finishing Trowel. Leave to harden until it is dry to the touch.



6 Smooth the surface with the edge of the StoCalce Marmorino Finishing Trowel again or compact it.

Note

The surface appearance can be controlled. Factors such as full-surface or partial texturing and more or less strong smoothing can create different results.



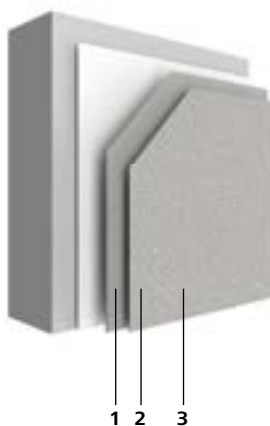
StoLevell Calce FS #07

Calce Grossa



Description	• Functional filler with natural sand
Products	<ul style="list-style-type: none"> • 09320-008 StoLevell Calce FS natural white • 04399-002 StoEffect Terrazzo natural • 04252-003 StoLook Punto F nero ebano
Tools	<ul style="list-style-type: none"> • 08255-001 Sto-Adjustable Notched Trowel • 08373-001 Sto-Notched Blade C2 • 08290-015 Sto-Finishing Spatula with soft grip, rounded • 18876-002 Sto-Terrazzo-Effect Pistole • 17818-001 Sto-Rolle Terrazzo Effect • 08288-030 Sto-Finishing Trowel
Colour shades shown	• Nero Ebano 20 %
Possible colour shades	• StoLevell Calce FS has limited tintability

System build-up



- 1 — StoLevell Calce FS
 2 — StoLevell Calce FS
 3 — StoEffect Terrazzo

Substrate preparation

Depending on the type and condition of the substrate, apply a levelling coat of quality level 2 (Q2) with StoLevell In Fill. Once it has dried sufficiently, sand, dust off, and prime with StoPrim GT. After drying, apply StoPrep In evenly with the Sto-Malerwalze Standard Langflor, covering the entire surface.



1 Apply StoLevell Calce FS to grain size as a filler base coat using a Sto-Finishing Trowel and smooth. Leave the surface to dry.



2 Apply and texture the StoLevell Calce FS with the rust-free Sto-Adjustable Notched Trowel and the Sto-Notched Blade C2.



3 Then smooth with the Sto-Finishing Spatula.



4 Immediately afterwards, blow the StoEffect Terrazzo natural sand mixture into the render while it is still wet using the Sto-Terrazzo-Effect Pistole, working from top to bottom in gentle circular movements similar to a figure of eight. Leave to harden until it feels dry to the back of the hand.

Important: Before starting work, cover the floor and any adjacent surfaces.



5 Use the Sto-Rolle Terrazzo Effect to press the sand mixture into the soft render. Use a finishing trowel in areas that are difficult to reach.



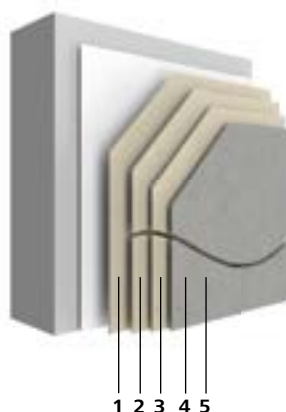
StoLevell Calce FS #08

Rope



Description	• Functional filler with marble powder aggregates in rope technique
Products	• 09320-001 StoLevell Calce FS natural white • 04250-003 StoLook Punto F giallo mori • 04252-003 StoLook Punto F nero ebano
Tools	• 08288-030 Sto-Finishing Trowel • 08376-002 StoCalce Marmorino Finishing Trowel • 08288-010 Sto-Finishing Trowel Notched, 8x8 • 08355-005 Sto-Leaf and Square Tool • 08334-005 Sto-Plumb Line
Colour shades shown	• Giallo Mori 5 % • Nero Ebano 20 %
Possible colour shades	• StoLevell Calce FS has limited tintability

System build-up



- 1 — StoLevell Calce FS
- 2 — StoLevell Calce FS with StoLook Punto F
- 3 — StoLevell Calce FS with StoLook Punto F
- 4 — StoLevell Calce FS with StoLook Punto F
- 5 — StoLevell Calce FS with StoLook Punto F



View this guideline as a film:
Simply scan the QR code or go to the YouTube channel.

Substrate preparation

Depending on the type and condition of the substrate, apply a levelling coat of quality level 2 (Q2) with StoLevell In Fill. Once it has dried sufficiently, sand, dust off, and prime with StoPrim GT. After drying, apply StoPrep In evenly with the Sto-Malerwalze Standard Langflor, covering the entire surface.



1 Apply StoLevell Calce FS to grain size as a filler base coat using a Sto-Finishing Trowel and smooth. Leave the surface to dry.



2 Mix StoLook Punto F in the colour shade Giallo Mori into the StoLevell Calce FS (dry matter) (add 5 % StoLook Punto F). Mix the mixture with water to produce a workable plaster, following the specifications in the Technical Data Sheet. Apply StoLevell Calce FS with the Sto-Finishing Trowel, then immediately apply the texture evenly using the Sto-Finishing Trowel Notched, 8x8.



3 Lay the Sto-Plumb Line on the fresh coating at the desired point and press in using the Sto-Leaf and Square Tool. Leave the surface to dry.



4 Remove the protruding tips of the plaster using the Sto-Finishing Trowel.



5 Fill the 8x8 notching in the same colour shade with StoLevell Calce FS. Leave the surface to dry.



6 Mix StoLook Punto F in the colour shade Nero Ebanio into the StoLevell Calce FS (dry matter) (add 20 % StoLook Punto F). Mix the mixture with water to produce a workable plaster, following the specifications in the Technical Data Sheet. Apply StoLevell Calce FS as a scratch coat in a criss-cross pattern using the Sto-Finishing Trowel, and tool and smooth it. Leave to harden until it is dry to the touch.



7 Again apply StoLevell Calce FS in the same colour shade as a scratch coat in a criss-cross pattern using the StoCalce Marmorino Smoothing Trowel, and tool and smooth.



8 Compact the scratch coat as soon as it is dry to the touch using the StoCalce Marmorino Finishing Trowel until the desired appearance is achieved. Leave to harden.



9 Carefully pull the Sto-Plumb Line out of the thoroughly hardened surface and sweep out the resulting grooves with a brush.



StoLook Texture #01

Linear 1



Description	• Texturing paint, textured in brush texture technique
Products	• 00282-002 StoLook Texture F tinted • 00571-002 StoLook Texture G tinted
Tools	• 17811-015 Sto-Malerwalze Standard, Langflor • 08288-030 Sto-Finishing Trowel • 08296-116 Mirka Abranet P180 • 08218-003 Sto-Texturing Brush
Colour shades shown	• 16285 Architectural Colours
Possible colour shades	• StoLook Texture F/G have unlimited tintability

System build-up



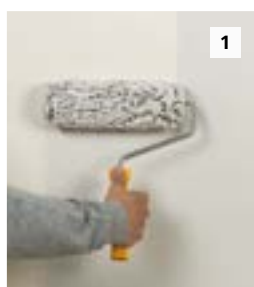
- 1 — StoLook Texture F/G
2 — StoLook Texture F/G

Substrate preparation

Depending on the type and condition of the substrate, apply a levelling coat of quality level 3 (Q3) with StoLevell In Sil. Once it has dried sufficiently, sand, dust off, and prime with StoPrim GT.

Note

After a few brushstrokes, tap the texturing brush to remove any excess material.



Dilute StoLook Texture F/G with approx. 10 % water and apply with the Sto-Malerwalze Standard Kurzflor. Make sure that no roller texture remains. As an option, you can apply StoLook Texture F/G one or more times as a filler base coat with a rust-free Sto-Finishing Trowel.



If roller textures are still visible after drying, sand them until they are even. Then remove any dust from the surface.



Apply StoLook Texture F/G generously with the Sto-Malerwalze Standard Langflor. Only apply to the area that will subsequently be textured.

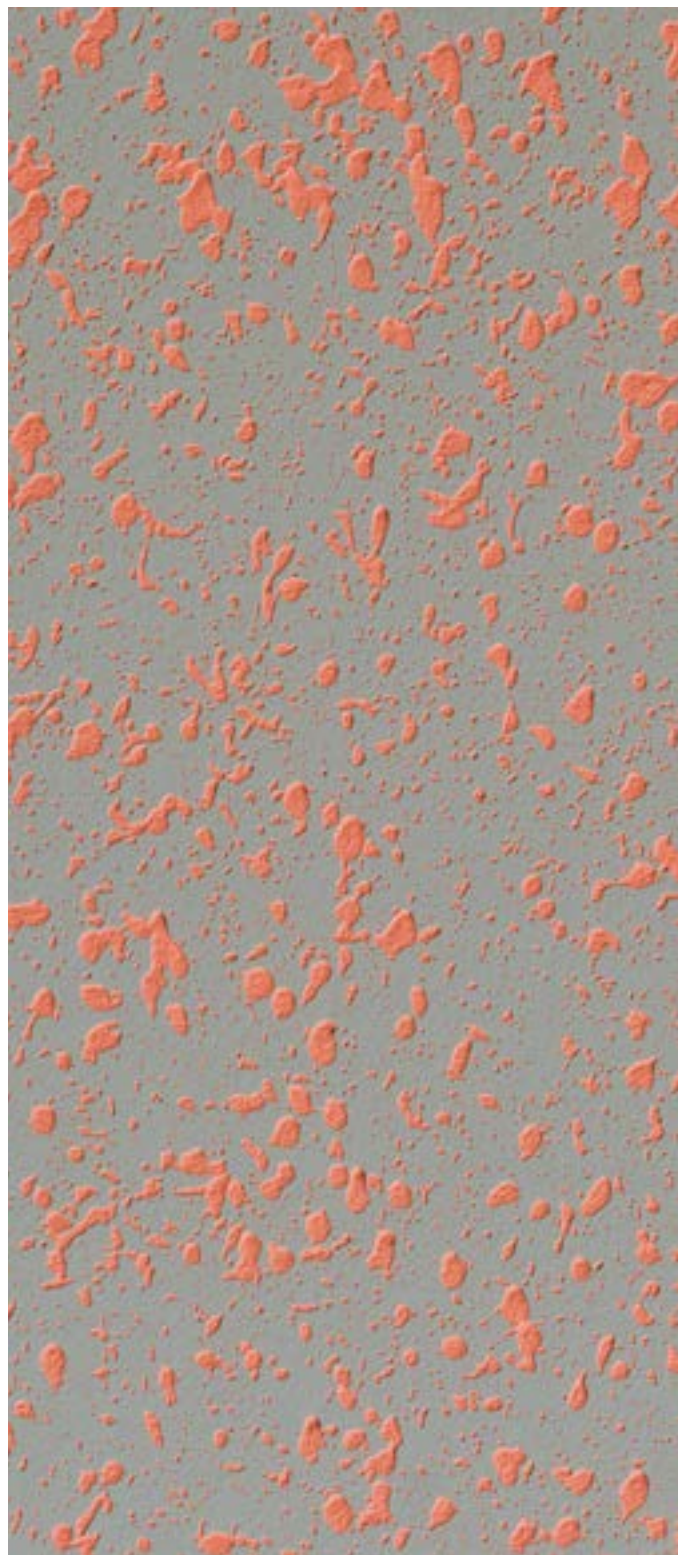


Texture the wet surface with the Sto-Texturing Brush. When texturing, hold the brush at an acute angle and make brushstrokes of approx. 60 to 70 cm with the handle facing the plaster surface. The brush transitions should be directed towards the adjacent brushstroke and applied in an offset manner (working in the same way as offset brickwork).



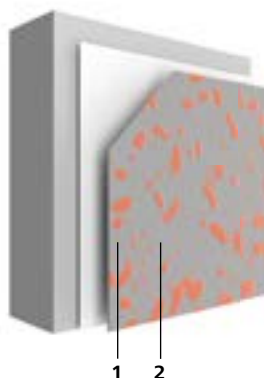
StoLook Texture #02

Colour dotting



Description	• Texturing paint, sprayed
Products	• 00024-002 StoColor Opticryl Matt tinted • 00571-002 StoLook Texture G tinted
Tools	• 17800-030 Sto-FineCoat Roller • 18854-001 Sto-Hopper Gun • 17800-022 Sto-Paint Roller FIL Kurzflor • 18854-00w3 Replacement nozzle for Hopper Gun 6 mm
Colour shades shown	• 16290 Architectural Colours (StoColor Opticryl Matt) • Similar to 32403 StoColor System (StoLook Texture G)
Possible colour shades	• StoColor Opticryl Matt and StoLook Texture G have unlimited tintability

System build-up



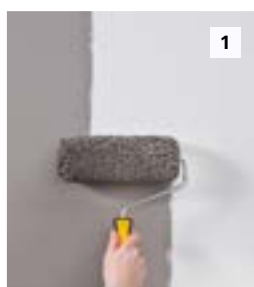
- 1 — StoColor Opticryl Matt
2 — StoLook Texture G



View this guideline as a film:
Simply scan the QR code or go to the YouTube channel.

Substrate preparation

Depending on the type and condition of the substrate, apply a levelling coat of quality level 3 (Q3) with StoLevell In Sil. Once it has dried sufficiently, sand, dust off, and prime with StoPrim GT.



1

Apply StoColor Opticryl Matt twice with the Sto-FineCoat Roller. Leave the surface to dry.



2

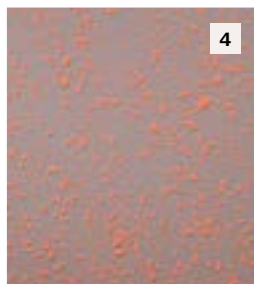
Dilute StoLook Texture G with water to 7 %. Fill the Sto-Hopper Gun (6-mm replacement nozzle) with the material. Set the air pressure to 0.5–0.8 bar and determine the amount of material on the Hopper Gun. Define the spray pattern on a test surface.



3

Spray StoLook Texture G onto the surface at intervals of 1.5–2.0 m, working with an open spray from top to bottom and making gentle circular motions similar to a figure of eight.

Important: Before starting work, cover the floor and any adjacent surfaces.



4

Observe the surface from a distance of 2–3 m. If necessary, spray material onto parts of the surface again.

Note

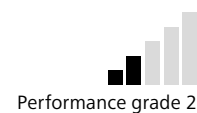
For adjacent areas in internal corners, separate the surfaces from one another and work on them separately. Warning: Air turbulence may be generated that affects the spray pattern.

This technique opens up a wide range of surfaces that vary depending on the quality of the substrate, the covering density, the spraying distance, the spray impact, the colour choice, the dilution of the material, and the tradesman's signature style.



StoLook Texture #03

Lava rock appearance



Description	• Texturing paint, with silicon carbide, textured
Products	• 00282-002 StoLook Texture F tinted • 14217-002 Sto-Silicon Carbide F54
Tools	• 08219-022 Sto-Decorative Roller Cover Farfalla • 18854-001 Sto-Hopper Gun • 18854-002 Replacement nozzle for Hopper Gun 4mm
Colour shades shown	• 37100 StoColor System
Possible colour shades	• The colour choice is limited for this technique. • Additional colour shades: 37101 from StoColor System and 16279 from Architectural Colours.

System build-up



- 1 — StoLook Texture F
2 — StoLook Texture F
3 — Sto-Silicon Carbide F54



View this guideline as a film:
Simply scan the QR code or go to the YouTube channel.

Substrate preparation:

Depending on the type and condition of the substrate, apply a levelling coat of quality level 3 (Q3) with StoLevell In Sil. Once it has dried sufficiently, sand, dust off, and prime with StoPrim GT.



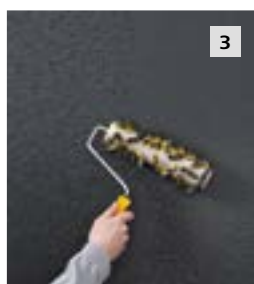
1

Dilute StoLook Texture F with approx. 10 % water and apply with the Sto-Paint Roller Standard long-pile. Leave the surface to dry.



2

Apply StoLook Texture F again evenly with the Sto-Malerwalze Standard Langflor.



3

Then immediately texture the surface with the Sto-Decorative Roller Cover Farfalla in a criss-cross pattern with short strokes. Lightly moisten the Sto-Decorative Roller Cover with water first and then work it into the material.



4

Using the Sto-Hopper Gun (4-mm replacement nozzle) at an air pressure of 0.5 bar, blow the Sto-Silicon Carbide F54 special effect aggregates into the paint while it is still wet, working from top to bottom in gentle circular movements similar to a figure of eight. Leave the surface to dry.

Important: Before starting work, cover the floor and any adjacent surfaces.



5

Once the surface is thoroughly dried, sweep with a soft brush from top to bottom.

Note

For this surface, the colour shades are limited! Other possible colour shades are 37101 from StoColor System and 16279 from Architectural Colours.

The details created by hand, such as an even layer thickness, seamless texturing, and homogeneous coverage with special effect material, will produce a lively, fine surface texture with light reflections.

After completing the work, absorb the special effect material completely so that no sensitive floors are damaged.



StoLook Texture #04

Patina 1



Description	• Texturing paint in spotting technique
Products	• 00282-002 StoLook Texture F tinted
Tools	<ul style="list-style-type: none"> • 08288-030 Sto-Finishing Trowel • 08241-006 Sto-Velcro Float Handle • 08241-014 Sto-Moltopren® Sponge • 17800-030 Sto-FineCoat Roller • 08296-116 Mirka Abranet P180
Colour shades shown	<ul style="list-style-type: none"> • 16282 Architectural Colours (StoLook Texture F full-faced) • 16284 Architectural Colours (StoLook Texture F spotting)
Possible colour shades	• StoLook Texture F has unlimited tintability

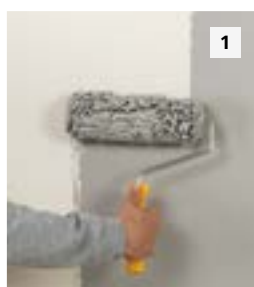
System build-up



- 1 — StoLook Texture F
 2 — StoLook Texture F
 3 — StoLook Texture F

Substrate preparation

Depending on the type and condition of the substrate, apply a levelling coat of quality level 3 (Q3) with StoLevell In Sil. Once it has dried sufficiently, sand, dust off, and prime with StoPrim GT.



Dilute StoLook Texture F with approx. 10% water and apply with the Sto-FineCoat Roller. Make sure that no roller texture remains. As an option, you can apply StoLook Texture F one or more times as a filler base coat with a rust-free Sto-Finishing Trowel.



If roller textures are still visible after drying, sand them until they are even. Then remove any dust from the surface.



Apply StoLook Texture F in the same colour shade as a thin-layer intermediate coat with a rust-free Sto-Finishing Trowel.



After a brief drying time, smooth the surface using a damp Sto-Moltopren® Sponge so it is pore-free, applying light pressure. Moisten the Sto-Moltopren® Sponge in measured amounts with a water spray bottle. Leave the surface to dry.



Apply StoLook Texture F in a second colour shade as a coarse, open spotted coating. Decant the material onto the surface and smooth it with the Sto-Finishing Trowel held at an acute angle.



Smooth the individual spot-smoothed finishes and their transitions with a slightly damp (not wet) Sto-Moltopren® Sponge so they are pore-free. Leave the surface to dry.



StoSil Patina #01

Denim



Description	• Dispersion silicate lasure, textured in comb texture technique
Products	• 00828-043 StoColl Tap • 02527-001 StoTap Pro 100 P • 00030-002 StoColor Opticryl Gloss tinted • 04970-002 StoSil Patina tinted
Tools	• 17800-030 Sto-FineCoat Roller • 08255-001 Sto-Adjustable Notched Trowel • 08373-023 Sto-Notched Blade, notch shape A3 • Clean cloth
Colour shades shown	• 16215 Architectural Colours (StoColor Opticryl Gloss) • 34400 StoColor System (StoSil Patina)
Possible colour shades	• StoSil Patina has limited tintability • StoColor Opticryl Gloss has unlimited tintability

System build-up



- 1 — StoColl Tap
- 2 — StoTap Pro 100 P
- 3 — StoColor Opticryl Gloss
- 4 — StoSil Patina



View this guideline as a film:
Simply scan the QR code or go to the YouTube channel.

Substrate preparation

Depending on the type and condition of the substrate, apply a levelling coat of quality level 4 (Q4) with StoLevell In Sil. Once it has dried sufficiently, sand, dust off, and prime with StoPrim GT.

Note

A variety of results and associations (e.g. denim) can be created depending on the type and style of texturing (e.g. directional or free texturing or even combing in waves) and choice of colour shade (with regard to the saturation and contrast ratio).



1

Apply a sufficient, even amount of StoColl Tap to the wall in a width of 1–2 strips. Lay the StoTap Pro 100 P wallpaper into the wet adhesive bed without bubbles, ensuring that it abuts. Immediately wipe any adhesive off the surface with a damp, clean cloth. The wallpaper has no soaking time. Leave the surface to dry.



2

Apply a full, even coating of StoColor Opticryl Gloss to the dried wallpaper with the Sto-FineCoat Roller. Leave the surface to dry.



3

Apply the StoSil Patina in a criss-cross pattern with the Sto-FineCoat Roller.



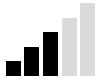
4

Then immediately texture the freshly coated surface in a criss-cross pattern using the Sto-Adjustable Notched Trowel and the Sto-Notched Blade with A3 notch shape. Clean the tool intermittently during this process. Leave the surface to dry.



StoTap Pro #01

Spotting technique

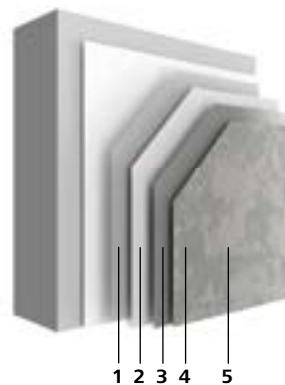


Performance grade 3



Description	• Glass-fibre nonwoven with metallic effect coating, glazed in spotting technique
Products	• 00828-043 StoColl Tap • 02527-001 StoTap Pro 100 P • 00319-003 StoColor Metallic tinted
Tools	• 17800-022 Sto-Paint Roller FIL short-pile • 08241-006 Sto-Velcro Float Handle without sponge • 08241-010 Sto-Rubber Float Sponge fine • 08376-002 StoCalce Marmorino Finishing Trowel
Colour shades shown	• 35821M StoColor Metallic • 35820M StoColor Metallic
Possible colour shades	• In accordance with StoColor Metallic Collection

System build-up



- 1 — StoColl Tap
- 2 — StoTap Pro 100 P
- 3 — StoColor Metallic
- 4 — StoColor Metallic
- 5 — StoColor Metallic

Substrate preparation

Depending on the type and condition of the substrate, apply a levelling coat of quality level 4 (Q4) with StoLevell In Sil. Once it has dried sufficiently, sand, dust off, and prime with StoPrim GT.



1

Bond StoTap Pro 100 P with StoColl Tap in double-cut method. Wash the seam area and any adhesive soiling immediately.



2

Apply a thin, even layer of StoColor Metallic (5% diluted with water) with the Sto-Malerwalze FIL Kurzflor.



3

While still wet, float the surface in a figure of eight with the sponge float (Sto-Velcro Float Handle with Rubber Float Sponge). Then leave the surface to dry (approx. half a day, depending on external influences).



4

Apply a thin, even layer of StoColor Metallic undiluted with the Sto-Paint Roller FIL short-pile and float the surface again while still wet in a figure of eight with the sponge float.



5

Press StoColor Metallic in a second colour shade over the full surface of the substrate with the StoCalce Marmorino Finishing Trowel and distribute in different directions.



StoTap Pro #02 Metallic



Description	• Glass-fibre nonwoven with metallic effect coating, glazed
Products	• 00828-043 StoColl Tap • 02527-014 StoTap Pro 300 P • 00319-003 StoColor Metallic tinted
Tools	• 17800-022 Sto-Paint Roller FIL short-pile • 08241-006 Sto-Velcro Float Handle without sponge • 08241-010 Sto-Rubber Float Sponge fine
Colour shades shown	• 35800M StoColor Metallic
Possible colour shades	• In accordance with StoColor Metallic Collection

System build-up



- 1 — StoColl Tap
- 2 — StoTap Pro 300 P
- 3 — StoColor Metallic
- 4 — StoColor Metallic

Substrate preparation

Depending on the type and condition of the substrate, apply a levelling coat of quality level 4 (Q4) with StoLevell In Sil. Once it has dried sufficiently, sand, dust off, and prime with StoPrim GT.



1

Apply a sufficient, uniform amount of StoColl Tap to the wall in a width of 1–2 strips. The consistency of the adhesive must be adjusted to suit the mesh and may need to be diluted. Bond StoTap Pro 300 P with StoColl Tap in double-cut method with utility knife. Wash the seam area and any adhesive soiling immediately.



2

Apply a thin, even layer of StoColor Metallic (5% diluted with water) with the Sto-Paint Roller FIL short-pile.



3

While still wet, float the surface in a figure of eight with the sponge float (Sto-Velcro Float Handle with Rubber Float Sponge).

Then leave the surface to dry (approx. half a day, depending on external influences).



4

Apply a thin, even layer of StoColor Metallic undiluted with the Sto-Malerwalze FIL Kurzflor and float the surface again while still wet in a figure of eight with the sponge float.

Note

Alternatively, a nonwoven abrasive (e.g. 3M Multi-Flex™ nonwoven abrasive), Sto-Handschleifvlies Standard, a brush, or other tool can be used instead of the float sponge for both application cycles to reinforce the effect of the floating or float-finishing and to texture the metallic coating.

Recommendation

A third application cycle (undiluted) may be necessary depending on the colour shade.



Optional enhancements

Patina and wax

Enhancement with StoLook Wax



1 Mix the StoLook Oro, Rame, Argento effect powder with the StoLook Wax (1–5 % Oro, Rame, Argento). Apply the mixture with the StoCalce Marmorino Finishing Trowel.



2 After the StoLook Wax has dried, polish the surface with a lint-free cloth.

Note

If adding more effect powder, the use of StoLook Wax forte is recommended.

Enhancement with StoSil Patina



1 Mix StoSil Patina tinted with StoSil Patina transparent in equal parts and stir well. Apply the mixture in a criss-cross pattern with the Sto-FineCoat Roller.



2 Distribute the patina over the surface with the Sto-Rubber Float Sponge fine in circular motions similar to a figure of eight wet-on-wet.



Notes and tips

Basic information

Achieving good results requires a certain degree of skill and knowledge of the trade, plus preliminary training in the relevant techniques.

Hand-held samples and sample surface areas

Smaller hand-held samples or sample surface areas are not always suitable for providing an overall impression of an application technique on larger surfaces. For this reason, we highly recommend having a project-specific sample surface area created by the contractor. The finished sample surface area should be approved by the site manager. It serves as the reference surface for the services commissioned.

Planning the work procedure and allocating tasks/responsibilities

Before work commences, tasks such as the application, smoothing, texturing, or blowing in of effects should be allocated to designated tradespeople. Each coating process must be planned carefully and the necessary materials must be prepared accordingly.

Uniform application

Each and every surface finish that is created by hand will necessarily bear the unique and individual signature of the tradesman who worked on it. To ensure consistency, the texture of a smaller surface should be created by one and the same person wherever possible. Where large surfaces are concerned, individual application techniques can be combined by working closely in a team to ensure a harmonious appearance on completion.

Corner areas/connections

Connections and corner areas must be planned carefully. A different application technique might need to be selected for these areas. Not every technique will reach internal corners, for example.

Headquarters

Sto SE & Co. KGaA Market Development

Ehrenbachstrasse 1
79780 Stühlingen
Germany

Phone +49 7744 57-1131
Fax +49 7744 57-2428
info.international@sto.com
www.sto.com

Sto Werkstatt London

International Project
Support Hub
153-157 Goswell Road
Clerkenwell
London EC1V 7HD

Phone +44 20 7222 2221
werkstatt@sto.com
werkstatt.sto.com

Your Contact

