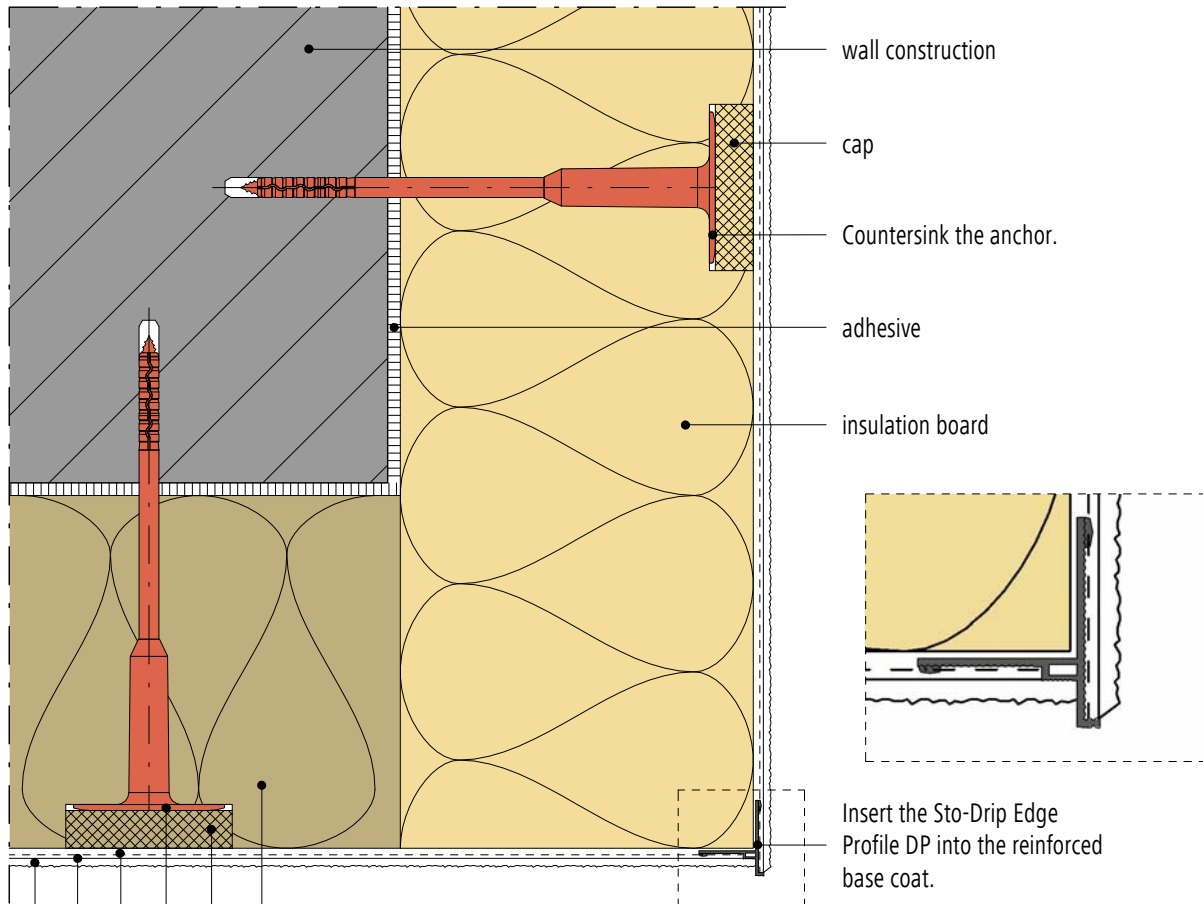


External wall insulation system

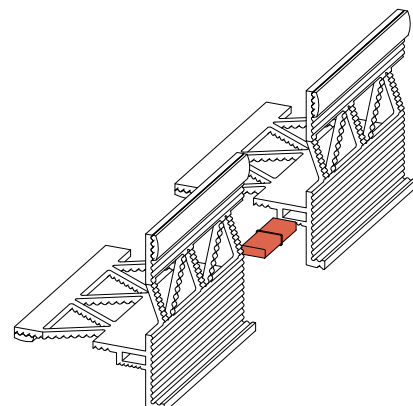
External wall/system transition (vertical section): Drip edge with drip edge profile

Rev. no. 2018-05-01
Sto-HQ-EN

GEN-0275



- insulation board
- cap
- Countersink the anchor.
- reinforced base coat
- intermediate coat if necessary
- Apply a finishing render and, if necessary, a paint coat.



Connect the Sto-Drip Edge Profiles DP in the joint area.

Note: This drawing is a general, non-binding planning suggestion which depicts the execution only schematically, but is no substitute for the required working and detail drawing as well as the installation plans. The applicator/planner/customer is independently responsible for determining the suitability, completeness and dimensions of the product for the particular construction project. Neighbouring works are described only schematically. All specifications and assumptions must be adjusted or agreed in the light of local conditions. Compliance with the technical specifications contained in the Technical Data Sheets, application guidelines, and system approvals is mandatory.