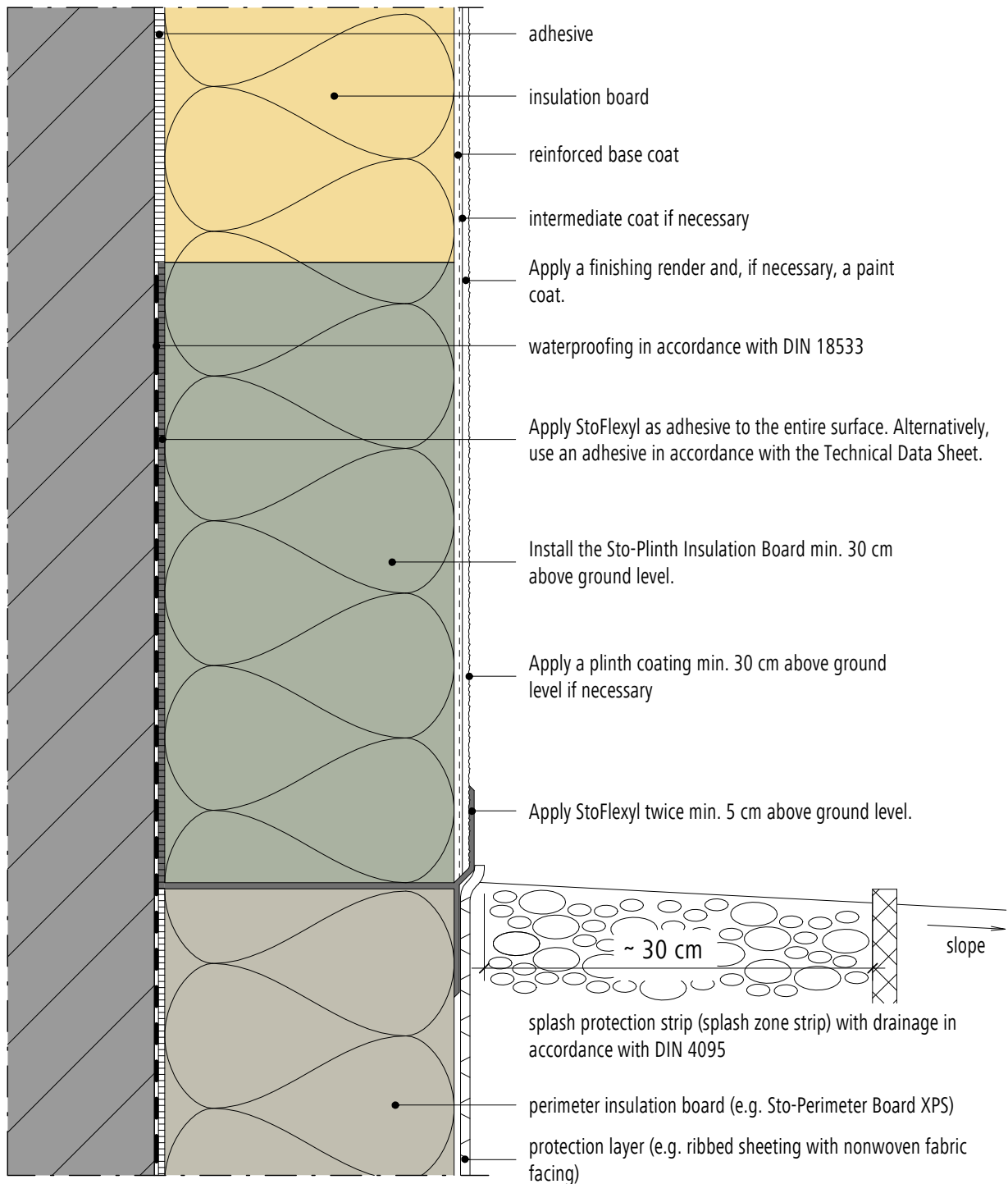


External wall insulation system

Plinth (vertical section): Ground and splash zone with Sto-Plinth Insulation Board and perimeter insulation already available on-site, increased moisture protection

Rev. no. 2018-05-01
Sto-HQ-EN

GEN-0112



Note: This drawing is a general, non-binding planning suggestion which depicts the execution only schematically, but is no substitute for the required working and detail drawing as well as the installation plans. The applicator/planner/customer is independently responsible for determining the suitability, completeness and dimensions of the product for the particular construction project. Neighbouring works are described only schematically. All specifications and assumptions must be adjusted or agreed in the light of local conditions. Compliance with the technical specifications contained in the Technical Data Sheets, application guidelines, and system approvals is mandatory.